

Media Relations

Eaton Vance is part of Morgan Stanley Investment Management, the asset management division of Morgan Stanley. It provides advanced investment strategies and wealth management solutions to forward-thinking investors around the world. Through its distinct investment brands Eaton Vance Management, Parametric, Atlanta Capital, and Calvert, the Company offers a diversity of investment approaches, encompassing bottom-up fundamental active management, Responsible Investing, systematic investing and customized implementation of client-specified portfolio exposures. Exemplary service, timely innovation and attractive returns across market cycles have been hallmarks of Eaton Vance since 1924.

[VIEW PRESS RELEASES](#)

Press Contacts



Robyn Tice

Director of Media Relations

☎ 617-672-8940

✉ [Email](#)

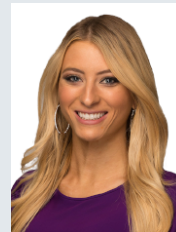


Colleen Lavery

Media Relations Manager

☎ 617-672-8995

✉ [Email](#)



Nicole Vicino

Senior Media Relations Associate

☎ 617-672-6583

✉ [Email](#)



Eric Senay

Director of Investor Relations

☎ 617-672-6744

✉ [Email](#)

About Eaton Vance

Advanced Investing

As investors have more sophisticated demands, advanced investment and wealth management solutions are needed.

[LEARN MORE](#)

Investment Brands

Our 4 brands —Eaton Vance Management, Parametric, Atlanta Capital, and Calvert — offer a range of distinctive strategies.

[VIEW OUR BRANDS](#)

Over 1,870 Employees

At Eaton Vance, we work hard to provide the resources, benefits and support to attract engaged and talented employees around the world.

[LEARN MORE](#)

Global Locations

We have offices in Boston; Seattle; Atlanta; New York City; Westport, CT; Marlboro, MA; Minneapolis; Washington, D.C.; London; Sydney; Dublin; Singapore and Tokyo.

[LEARN MORE](#)

Top Places to Work

Eaton Vance ranked #14 in the Boston Globe's 2020 Top Places to Work in Massachusetts in the largest employers category.

[LEARN MORE](#)

Responsible Investing

Calvert Research and Management is a recognized leader in the Responsible Investing space, with roots dating back to 1976.

[LEARN MORE](#)

Additional Resources

Press Releases

Explore our press releases and other announcements.

[VIEW PRESS RELEASES](#)

Eaton Vance In the News

Browse news coverage featuring our spokespeople.

[VIEW COVERAGE](#)



HEADQUARTERS

Two International Place
Boston, MA 02110

Global Locations

Atlanta
Boston
Minneapolis
New York City
Seattle
Washington, D.C.
Westport, CT
London
Singapore
Sydney
Tokyo

Strategies

[Eaton Vance Funds](#)
[Parametric Funds](#)
[Calvert Funds](#)
[Separately Managed Accounts](#)
[Closed-End Funds and Term Trusts](#)
[Institutional Strategies](#)
[UCITS and QIAIF Funds](#)
[Offshore Funds](#)

Brands

[Eaton Vance Management](#)
[Parametric](#)
[Atlanta Capital](#)
[Calvert](#)

Services

[U.S. Charitable Gift Trust®](#)
[Eaton Vance WaterOak Advisors](#)
[NextShares Solutions LLC™](#)
[Advanced Fund Solutions](#)

[Accessibility](#) | [Business Continuity](#) | [Privacy & Security](#) | [Terms & Conditions](#) | [Contact](#) | [Investor Account Access](#) | [Form CRS](#) | [Code of Business Conduct](#)

Eaton Vance is part of Morgan Stanley Investment Management, the asset management division of Morgan Stanley

At Eaton Vance, we value independent thinking. We encourage our investment teams to share their perspectives. Because we believe that when investors hear a range of strongly argued perspectives, they sharpen their own independent views.

Before investing in any Eaton Vance fund, prospective investors should consider carefully the fund's investment objective(s), risks, and charges and expenses. For open-end mutual funds, the fund's current prospectus contains this and other information about the fund. To obtain a mutual fund prospectus or summary prospectus, if available, and the most recent annual and semiannual shareholder reports, contact your financial advisor or download a copy [here](#). Read the prospectus carefully before you invest or send money. For closed-end funds, you should contact your financial advisor. To obtain the most recent annual and semi-annual shareholder report for a closed-end fund contact your financial advisor or download a copy [here](#). Before purchasing any variable product, consider the objectives, risks, charges, and expenses associated with the underlying investment option(s) and those of the product itself. For a prospectus containing this and other information, contact your investment or insurance professional. Read the prospectus carefully before investing.

NOT FDIC INSURED | OFFER NO BANK GUARANTEE | MAY LOSE VALUE | NOT INSURED BY ANY FEDERAL GOVERNMENT AGENCY | NOT A DEPOSIT

Eaton Vance does not provide tax or legal advice. Prospective investors should consult with a tax or legal advisor before making any investment decision. The information on this Website is for U.S. residents only. The information on this Website does not constitute an offer to sell, or a solicitation of an offer to purchase, securities in any jurisdiction to any person to whom it is not lawful to make such an offer. Investing entails risks and there can be no assurance that Eaton Vance (and its brands) will achieve profits or avoid incurring losses. Prospective investors should consult with a tax or legal advisor before making any investment decision.

© Eaton Vance Management. All rights reserved. Eaton Vance open-end mutual funds are offered through Eaton Vance Distributors, Inc. Two International Place, Boston, MA 02110.

Publication details: Tuesday, April 13, 2021 12:21 PM

Page ID: 1137 - <https://www.eatonvance.com/media-relations.php>