

# Contacts and Locations

Please see below for additional information on Eaton Vance's global contacts and office locations.

## In the U.S., please contact:

### United States

Eaton Vance  
Two International Place  
Boston, MA 02110  
800-836-2414  
[www.eatonvance.com](http://www.eatonvance.com)

## For international inquiries, please contact:

### United Kingdom

Eaton Vance Management  
(International) Limited  
125 Old Broad Street, London  
EC2N 1AR, United Kingdom  
+44 (0)203 207 1900

### Germany

Eaton Vance Global Advisors  
Limited, Deutschland  
Neue Rothofstraße 13-19,  
60313 Frankfurt am Main,  
Germany  
+49 151 559 334 97

### Singapore

Eaton Vance Management  
International (Asia) Pte. Ltd.  
8 Marina View, 13-01 Asia Square  
Tower 1 Singapore 018960  
+65 6713 9241

### Australia

Eaton Vance Management  
(International) Limited  
Suite 05, Level 25, 259 George  
Street, Sydney NSW 2000,  
+61 2 8229 0200

### Japan

Eaton Vance Asia Pacific Ltd.  
Otemachi Park Building 7,  
1-1-1 Otemachi, Chiyoda-ku,  
Tokyo, Japan 100-0004  
+81 (0)3 5220 5713

### Ireland

Eaton Vance Global Advisors  
Limited  
Alexandra House, Suite 108, The  
Sweepstakes  
Ballsbridge, Dublin D04 C7H2,  
Ireland  
+353 (0) 1 664 1428

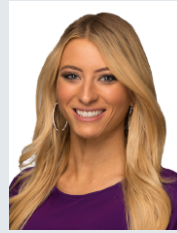
## Press Contacts



**Robyn Tice**  
Director of Media  
Relations  
☎ 617-672-8940  
[✉ Email](#)



**Colleen  
Lavery**  
Media Relations  
Manager  
☎ 617-672-8995  
[✉ Email](#)



**Nicole  
Vicino**  
Media Relations  
Associate  
☎ 617-672-6583  
[✉ Email](#)



**Eric Senay**  
Director of  
Investor Relations  
☎ 617-672-6744  
[✉ Email](#)

## Brand Locations

### EVM

Two International Place  
Boston, MA

### Parametric

800 Fifth Avenue  
Seattle, WA

### Atlanta Capital

1075 Peachtree Street NE  
Atlanta, Georgia

### Calvert

1825 Connecticut Ave NW  
Washington, DC



#### HEADQUARTERS

Two International Place  
Boston, MA 02110

#### Global Locations

Atlanta  
Boston  
Minneapolis  
New York City  
Seattle  
Washington, D.C.  
Westport, CT  
London  
Singapore  
Sydney  
Tokyo

#### Strategies

[Eaton Vance Funds](#)  
[Parametric Funds](#)  
[Calvert Funds](#)  
[Separately Managed Accounts](#)  
[Closed-End Funds and Term Trusts](#)  
[Institutional Strategies](#)  
[UCITS and QIAIF Funds](#)  
[Offshore Funds](#)

#### Brands

[Eaton Vance Management](#)  
[Parametric](#)  
[Atlanta Capital](#)  
[Calvert](#)

#### Services

[U.S. Charitable Gift Trust®](#)  
[Eaton Vance WaterOak Advisors](#)  
[NextShares Solutions LLC™](#)  
[Advanced Fund Solutions](#)

[Accessibility](#) | [Business Continuity](#) | [Privacy & Security](#) | [Terms & Conditions](#) | [Contact](#) | [Investor Account Access](#) | [Form CRS](#) | [Code of Business Conduct](#)

*Eaton Vance is part of Morgan Stanley Investment Management, the asset management division of Morgan Stanley*

*At Eaton Vance, we value independent thinking. We encourage our investment teams to share their perspectives. Because we believe that when investors hear a range of strongly argued perspectives, they sharpen their own independent views.*

*Before investing in any Eaton Vance fund, prospective investors should consider carefully the fund's investment objective(s), risks, and charges and expenses. For open-end mutual funds, the fund's current prospectus contains this and other information about the fund. To obtain a mutual fund prospectus or summary prospectus, if available, and the most recent annual and semiannual shareholder reports, contact your financial advisor or download a copy [here](#). Read the prospectus carefully before you invest or send money. For closed-end funds, you should contact your financial advisor. To obtain the most recent annual and semi-annual shareholder report for a closed-end fund contact your financial advisor or download a copy [here](#). Before purchasing any variable product, consider the objectives, risks, charges, and expenses associated with the underlying investment option(s) and those of the product itself. For a prospectus containing this and other information, contact your investment or insurance professional. Read the prospectus carefully before investing.*

**NOT FDIC INSURED | OFFER NO BANK GUARANTEE | MAY LOSE VALUE | NOT INSURED BY ANY FEDERAL GOVERNMENT AGENCY | NOT A DEPOSIT**

*Eaton Vance does not provide tax or legal advice. Prospective investors should consult with a tax or legal advisor before making any investment decision. The information on this Website is for U.S. residents only. The information on this Website does not constitute an offer to sell, or a solicitation of an offer to purchase, securities in any jurisdiction to any person to whom it is not lawful to make such an offer. Investing entails risks and there can be no assurance that Eaton Vance (and its brands) will achieve profits or avoid incurring losses. Prospective investors should consult with a tax or legal advisor before making any investment decision.*

© Eaton Vance Management. All rights reserved. Eaton Vance open-end mutual funds are offered through Eaton Vance Distributors, Inc. Two International Place, Boston, MA 02110.

Publication details: Tuesday, April 13, 2021 12:21 PM

Page ID: 36010 - <https://www.eatonvance.com/contacts-locations.php>