



PRODUCT FINDER

WEALTH STRATEGIES

INVESTMENTS

INSIGHTS

TAXES AND TOOLS

Calvert Small-Cap Fund (R6)

The Fund seeks to provide long-term capital appreciation through investment primarily in small-cap common stocks of U.S. companies.

R6 ▾

Share Class

CALRX

Symbol

\$36.76 \$0.22

NAV as of Sep 17, 2024

**Fact Sheet**

Jun 30, 2024

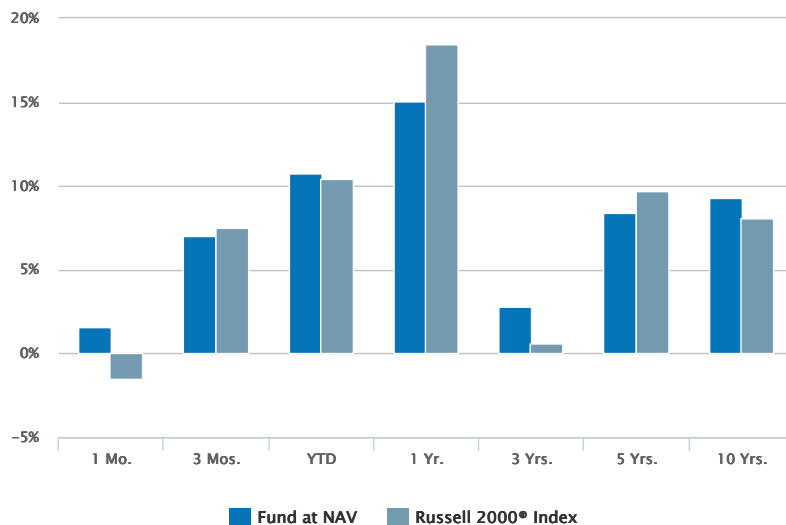
**Commentary/Attribution**

Jun 30, 2024

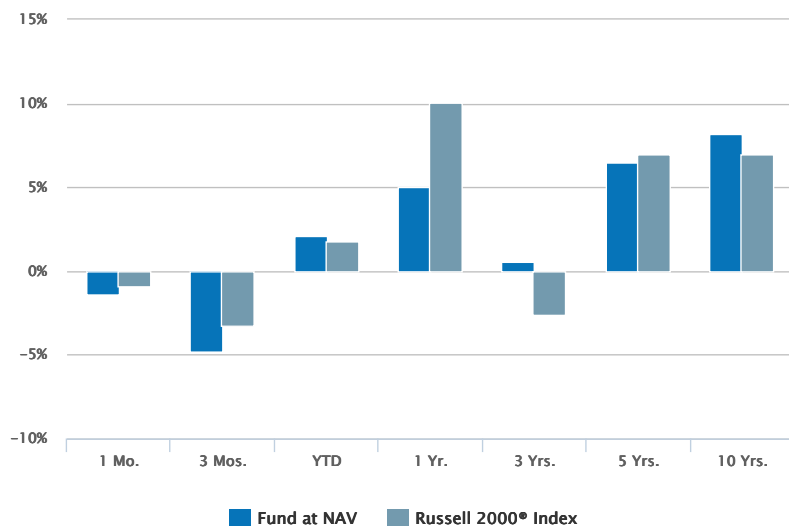
Overview

Historical Returns (%)

as of Jun 30, 2024

08/31/2024**06/30/2024**

Past performance is no guarantee of future results. Investment return and principal value will fluctuate so that shares, when redeemed, may be worth more or less than their original cost. Performance is for the stated time period only; due to market volatility, the Fund's current performance may be lower or higher than quoted. Returns are historical and are calculated by determining the percentage change in net asset value (NAV) with all distributions reinvested. Returns for other classes of shares offered by the Fund are different. Performance less than or equal to one year is cumulative. Performance prior to December 31, 2016 reflects the performance of the Fund's former adviser, Calvert Investment Management, Inc.



08/31/2024							
Fund at NAV	1.57	7.03	10.75	15.05	2.81	8.43	9.31
Russell 2000® Index ¹	-1.49	7.51	10.39	18.47	0.60	9.67	8.03
06/30/2024							
Fund at NAV	-1.36	-4.83	2.07	5.02	0.59	6.45	8.18
Russell 2000® Index ¹	-0.93	-3.28	1.73	10.06	-2.58	6.93	7.00

Past performance is no guarantee of future results. Investment return and principal value will fluctuate so that shares, when redeemed, may be worth more or less than their original cost. Performance is for the stated time period only; due to market volatility, the Fund's current performance may be lower or higher than quoted. Returns are historical and are calculated by determining the percentage change in net asset value (NAV) with all distributions reinvested. Returns for other classes of shares offered by the Fund are different. Performance less than or equal to one year is cumulative. Performance prior to December 31, 2016 reflects the performance of the Fund's former adviser, Calvert Investment Management, Inc.

Fund Facts

as of Aug 31, 2024

Class R6 Inception	02/01/2019
Performance Inception	10/01/2004
Investment Objective	Long-term capital appreciation
Total Net Assets	\$2.8B
Minimum Investment	\$5000000
Expense Ratio ²	0.86%
CUSIP	13161P672

Top 10 Holdings (%)^{3,4}

as of Jun 30, 2024

AptarGroup Inc	3.19
Dorman Products Inc	3.02
Chemed Corp	2.93
Essential Properties Realty Trust Inc	2.92
Aramark	2.82
CBIZ Inc	2.81
Commerce Bancshares Inc/MO	2.67
US Physical Therapy Inc	2.55
Core & Main Inc	2.45
IDACORP Inc	2.38
Total	27.75

Portfolio Management

[Michael D. McLean, CFA](#)

[Managed Fund since 2016](#)

[Griff Noble, CFA](#)

[Managed Fund since 2016](#)

RISK CONSIDERATIONS

The value of investments held by the Fund may increase or decrease in response to economic, and financial events (whether real, expected or perceived) in the U.S. and global markets. The value of equity securities is sensitive to stock market volatility. Smaller companies are generally subject to greater price fluctuations, limited liquidity, higher transaction costs and higher investment risk than larger, more established companies. Investing primarily in responsible investments carries the risk that, under certain market conditions, the Fund may underperform funds that do not utilize a responsible investment strategy. The Fund is exposed to liquidity risk when trading volume, lack of a market maker or trading partner, large position size, market conditions, or legal restrictions impair its ability to sell particular investments or to sell them at advantageous market prices. The impact of the coronavirus on global markets could last for an extended period and could adversely affect the Fund's performance. No fund is a complete investment program and you may lose money investing in a fund. The Fund may engage in other investment practices that may involve additional risks and you should review the [Fund prospectus](#) for a complete description.

See the Fund's prospectus for information related to a primary benchmark index selected (if applicable) to comply with a regulation that requires the Fund's primary benchmark to represent the overall applicable market.

1. Russell 2000® Index is an unmanaged index of 2,000 U.S. small-cap stocks. Unless otherwise stated, index returns do not reflect the effect of any applicable sales charges, commissions, expenses, taxes or leverage, as applicable. It is not possible to invest directly in an index. Historical performance of the index illustrates market trends and does not represent the past or future performance of the fund.

2. Source: Fund prospectus.

3. Top 10 Holdings excludes cash and equivalents.

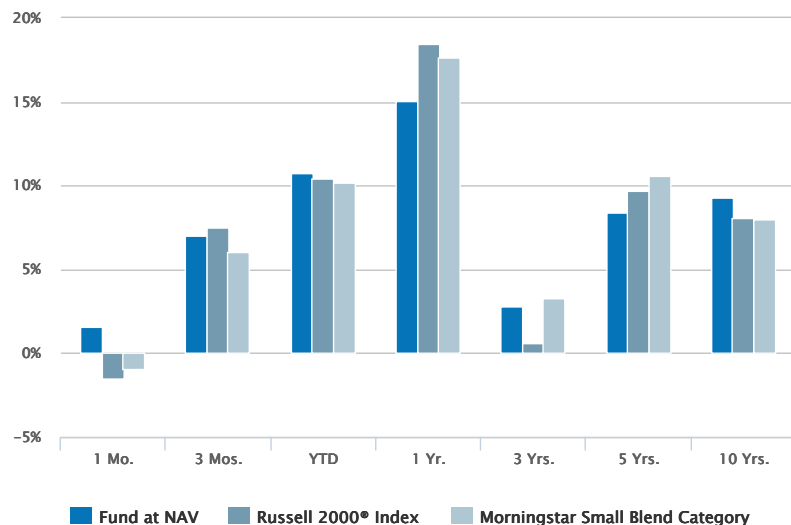
4. Percent of total net assets.

Performance

Historical Returns (%)

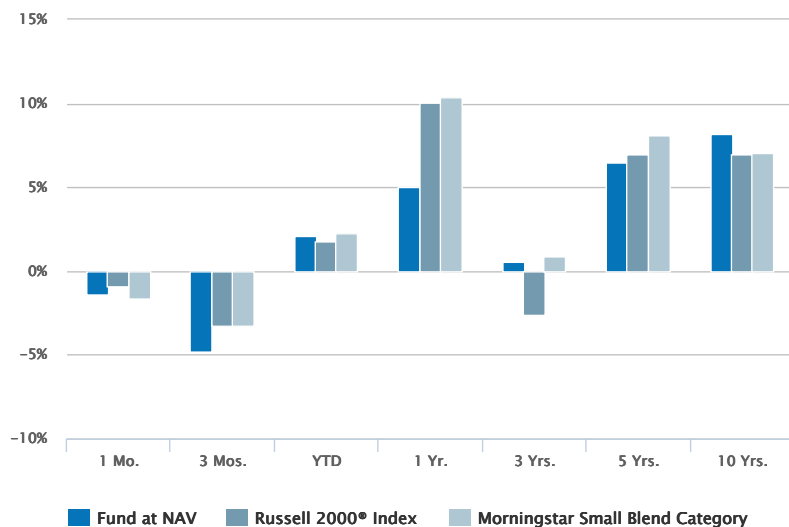
as of Jun 30, 2024

08/31/2024



06/30/2024

Past performance is no guarantee of future results. Investment return and principal value will fluctuate so that shares, when redeemed, may be worth more or less than their original cost. Performance is for the stated time period only; due to market volatility, the Fund's current performance may be lower or higher than quoted. Returns are historical and are calculated by determining the percentage change in net asset value (NAV) with all distributions reinvested. Returns for other classes of shares offered by the Fund are different. Performance less than or equal to one year is cumulative. Performance prior to December 31, 2016 reflects the performance of the Fund's former adviser, Calvert Investment Management, Inc.



08/31/2024								
Fund at NAV	1.57	7.03	10.75	15.05	2.81	8.43	9.31	
Russell 2000® Index ¹	-1.49	7.51	10.39	18.47	0.60	9.67	8.03	
Morningstar Small Blend Category ⁵	-0.96	6.02	10.19	17.61	3.25	10.62	7.99	
06/30/2024								
Fund at NAV	-1.36	-4.83	2.07	5.02	0.59	6.45	8.18	
Russell 2000® Index ¹	-0.93	-3.28	1.73	10.06	-2.58	6.93	7.00	
Morningstar Small Blend Category ⁵	-1.60	-3.26	2.25	10.40	0.88	8.14	7.07	

Past performance is no guarantee of future results. Investment return and principal value will fluctuate so that shares, when redeemed, may be worth more or less than their original cost. Performance is for the stated time period only; due to market volatility, the Fund's current performance may be lower or higher than quoted. Returns are historical and are calculated by determining the percentage change in net asset value (NAV) with all distributions reinvested. Returns for other classes of shares offered by the Fund are different. Performance less than or equal to one year is cumulative. Performance prior to December 31, 2016 reflects the performance of the Fund's former adviser, Calvert Investment Management, Inc.

Calendar Year Returns (%)

	2014	2015	2016	2017	2018	2019	2020	2021	2022	2023
Fund at NAV	7.64	-0.64	—	—	—	26.37	15.02	20.04	-15.83	11.81
Russell 2000® Index ¹	4.89	-4.41	21.31	14.65	-11.01	25.52	19.96	14.82	-20.44	16.93

Fund Facts

Class R6 Inception	02/01/2019
Performance Inception	10/01/2004
Expense Ratio ²	0.86%
Distribution Frequency	Annually

Morningstar Rating™

as of Aug 31, 2024

Time Period	Rating	Funds in Small Blend Category
Overall	★★★★	569
3 Years	★★★★	569
5 Years	★★★★	542
10 Years	☆☆☆☆☆	387

The Morningstar Rating™ for funds, or "star rating", is calculated for managed products (including mutual funds and exchange-traded funds) with at least a three-year history. Exchange-traded funds and open-ended mutual funds are considered a single population for comparative purposes. It is calculated based on a Morningstar Risk-Adjusted Return measure that accounts for variation in a managed product's monthly excess performance, placing more emphasis on downward variations and rewarding consistent performance. The top 10% of products in each product category receive 5 stars, the next 22.5% receive 4 stars, the next 35% receive 3 stars, the next 22.5% receive 2 stars, and the bottom 10% receive 1 star.

The Overall Morningstar Rating for a managed product is derived from a weighted average of the performance figures associated with its three-, five-, and 10-year (if applicable) Morningstar Rating metrics. The weights are: 100% three-year rating for 36-59 months of total returns, 60% five-year rating/40% three-year rating for 60-119 months of total returns, and 50% 10-year rating/30% five-year rating/20% three-year rating for 120 or more months of total returns. While the 10-year overall star rating formula seems to give the most weight to the 10-year period, the most recent three-year period actually has the greatest impact because it is included in all three rating periods. Star ratings do not reflect the effect of any applicable sales load. Hollow stars denote Morningstar Extended Performance Ratings and are considered estimates based on the performance of the fund's oldest share class, adjusted for fees and expenses.

©2024 Morningstar. All Rights Reserved. The information contained herein: (1) is proprietary to Morningstar and/or its content providers; (2) may not be copied or distributed; and (3) is not warranted to be accurate, complete or timely. Neither Morningstar nor its content providers are responsible for any damages or losses arising from any use of this information.

NAV History

Date	NAV	NAV Change
Sep 17, 2024	\$36.76	\$0.22
Sep 16, 2024	\$36.54	\$0.24
Sep 13, 2024	\$36.30	\$0.59
Sep 12, 2024	\$35.71	\$0.28
Sep 11, 2024	\$35.43	-\$0.06
Sep 10, 2024	\$35.49	-\$0.01
Sep 09, 2024	\$35.50	\$0.12
Sep 06, 2024	\$35.38	-\$0.46
Sep 05, 2024	\$35.84	-\$0.29
Sep 04, 2024	\$36.13	-\$0.12

Distribution History⁶

Ex-Date	Distribution	Reinvest NAV
Dec 14, 2023	\$0.13000	\$32.96

No records in this table indicates that there has not been a distribution greater than .0001 within the past 3 years.

[Fund prospectus](#)

Ex-Date	Distribution	Reinvest NAV
Dec 15, 2022	\$0.09140	\$30.03
Dec 07, 2021	\$0.06130	\$35.39

No records in this table indicates that there has not been a distribution greater than .0001 within the past 3 years.

[Fund prospectus](#)

Capital Gain History⁶

Ex-Date	Short-Term	Long-Term	Reinvest NAV
Dec 15, 2022		\$0.39230	\$30.03
Dec 07, 2021	\$1.19310	\$1.25900	\$35.39

No records in this table indicates that there has not been a capital gain greater than .0001 within the past 3 years.

[Fund prospectus](#)

Portfolio profile subject to change due to active management. Percentages may not total 100% due to rounding.

RISK CONSIDERATIONS

The value of investments held by the Fund may increase or decrease in response to economic, and financial events (whether real, expected or perceived) in the U.S. and global markets. The value of equity securities is sensitive to stock market volatility. Smaller companies are generally subject to greater price fluctuations, limited liquidity, higher transaction costs and higher investment risk than larger, more established companies. Investing primarily in responsible investments carries the risk that, under certain market conditions, the Fund may underperform funds that do not utilize a responsible investment strategy. The Fund is exposed to liquidity risk when trading volume, lack of a market maker or trading partner, large position size, market conditions, or legal restrictions impair its ability to sell particular investments or to sell them at advantageous market prices. The impact of the coronavirus on global markets could last for an extended period and could adversely affect the Fund's performance. No fund is a complete investment program and you may lose money investing in a fund. The Fund may engage in other investment practices that may involve additional risks and you should review the [Fund prospectus](#) for a complete description.

See the Fund's prospectus for information related to a primary benchmark index selected (if applicable) to comply with a regulation that requires the Fund's primary benchmark to represent the overall applicable market.

1. Russell 2000® Index is an unmanaged index of 2,000 U.S. small-cap stocks. Unless otherwise stated, index returns do not reflect the effect of any applicable sales charges, commissions, expenses, taxes or leverage, as applicable. It is not possible to invest directly in an index. Historical performance of the index illustrates market trends and does not represent the past or future performance of the fund.

2. Source: Fund prospectus.

5. The Morningstar Small Blend Category includes funds that invest primarily in U.S. small-cap companies where neither strong growth nor value characteristics predominate.

6. A portion of the Fund's returns may be comprised of return of capital or short term capital gains. The Fund will determine the tax characteristics of all Fund distributions after the end of the calendar year and will provide shareholders such information at that time. Please consult your tax advisor for further information.

Portfolio

Asset Mix (%)⁴

as of Jun 30, 2024

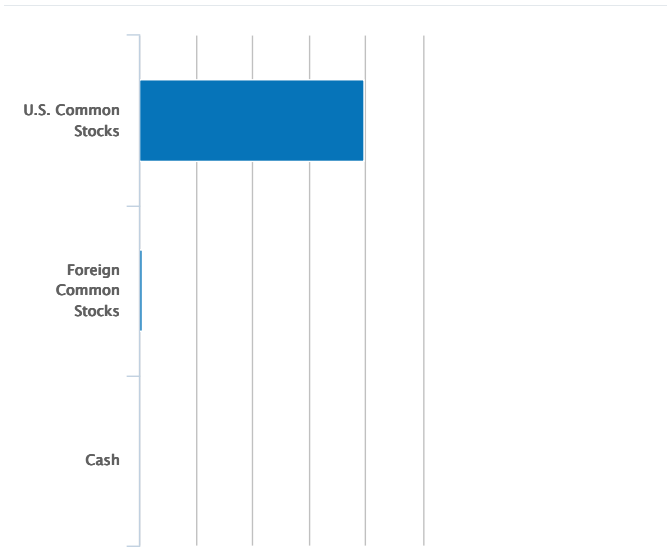
06/30/2024

Portfolio Statistics

as of Jun 30, 2024

Number of Holdings

66

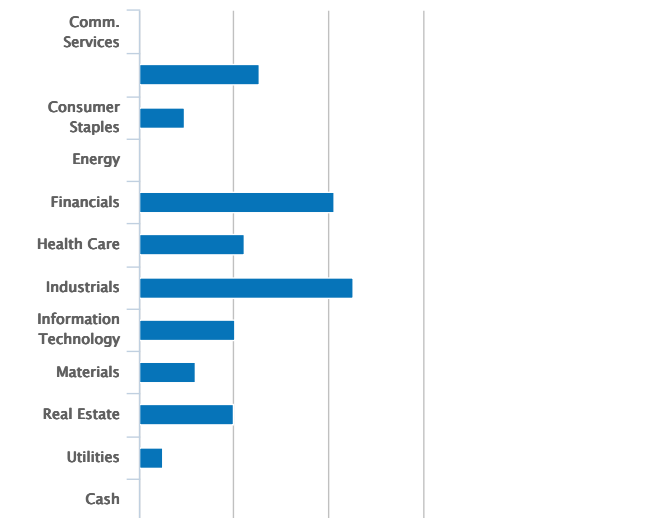


U.S. Common Stocks	99.05
Foreign Common Stocks	0.95
Cash	0.00
Total	100.00

GICS Sector Breakdown (%)⁴

as of Jun 30, 2024

06/30/2024



Comm. Services	—	2.20
Consumer Discretionary	12.69	10.45
Consumer Staples	4.78	3.52
Energy	—	7.48
Financials	20.59	15.98
Health Care	11.08	15.18
Industrials	22.62	17.17
Information Technology	10.11	15.29

Assets by Country (%)⁴

as of Jun 30, 2024

United States	99.05
Japan	0.95
Cash & Other Assets	0.00
Total	100.00

Materials	5.87	4.52
Real Estate	9.88	5.61
Utilities	2.38	2.59
Cash	0.00	—

Fund Holdings (%)^{4,7}

as of Jul 31, 2024

Holding	% of Net Assets
Dorman Products Inc	3.17%
AptarGroup Inc	3.15%
Commerce Bancshares Inc/MO	2.94%
Chemed Corp	2.92%
Essential Properties Realty Trust Inc	2.79%
Aramark	2.69%
Community Financial System Inc	2.62%
US Physical Therapy Inc	2.55%
Core & Main Inc	2.53%
CBIZ Inc	2.49%
View All	

Portfolio profile subject to change due to active management. Percentages may not total 100% due to rounding.

RISK CONSIDERATIONS

The value of investments held by the Fund may increase or decrease in response to economic, and financial events (whether real, expected or perceived) in the U.S. and global markets. The value of equity securities is sensitive to stock market volatility. Smaller companies are generally subject to greater price fluctuations, limited liquidity, higher transaction costs and higher investment risk than larger, more established companies. Investing primarily in responsible investments carries the risk that, under certain market conditions, the Fund may underperform funds that do not utilize a responsible investment strategy. The Fund is exposed to liquidity risk when trading volume, lack of a market maker or trading partner, large position size, market conditions, or legal restrictions impair its ability to sell particular investments or to sell them at advantageous market prices. The impact of the coronavirus on global markets could last for an extended period and could adversely affect the Fund's performance. No fund is a complete investment program and you may lose money investing in a fund. The Fund may engage in other investment practices that may involve additional risks and you should review the [Fund prospectus](#) for a complete description.

See the Fund's prospectus for information related to a primary benchmark index selected (if applicable) to comply with a regulation that requires the Fund's primary benchmark to represent the overall applicable market.

1. Russell 2000® Index is an unmanaged index of 2,000 U.S. small-cap stocks. Unless otherwise stated, index returns do not reflect the effect of any applicable sales charges, commissions, expenses, taxes or leverage, as applicable. It is not possible to invest directly in an index. Historical performance of the index illustrates market trends and does not represent the past or future performance of the fund.

4. Percent of total net assets.

7. The following list reflects unaudited securities holdings (excluding derivatives positions). Holdings information may differ if presented as of trade date. Due to rounding, holdings of less than 0.005% may show as 0.00%. Portfolio information subject to change due to active management.



Michael D. McLean, CFA

Managing Director, Co-Head of US
Small/Mid Cap
Joined Calvert Research and
Management 2016

Biography

Mike is a managing director of Morgan Stanley. He is Co-Head of the Eaton Vance U.S. Small/Midcap team and a portfolio manager. He is responsible for buy and sell decisions, portfolio construction and risk management for U.S. small- and midcap equity portfolios as well as coverage of the consumer discretionary and consumer staples sectors. He is also a vice president and portfolio manager for Calvert Research and Management. He began his career in the investment management industry with Eaton Vance in 2001. Morgan Stanley acquired Eaton Vance in March 2021.

Mike earned a B.S. from Providence College. He is a CFA charterholder and holds both the CFA Institute Certificate in ESG Investing and the Fundamentals of Sustainability Accounting FSA Credential.

Education

- B.S. Providence College

Experience

- Managed Fund since 2016



Griff Noble, CFA

Managing Director, Co-Head of US
Small/Mid Cap
Joined Calvert Research and
Management 2016

Biography

Griff is a managing director of Morgan Stanley. He is Co-Head of the Eaton Vance U.S. Small/Midcap team and a portfolio manager. He is responsible for buy and sell decisions, portfolio construction and risk management for U.S. small- and midcap equity portfolios as well as coverage of the energy and industrials sectors. He is also a vice president and portfolio manager for Calvert Research and Management. He joined Eaton Vance in 2012. Morgan Stanley acquired Eaton Vance in March 2021.

Griff began his career in the investment management industry in 1996. Before joining Eaton Vance, he was an equity analyst with BlackRock, Inc. He was previously affiliated with Byram Capital Management, Emerson Investment Management, Deutsche Asset Management and Putnam Investments.

Griff earned a B.S. from the University of Vermont and an MBA from Babson College. He is a member of CFA Society Boston and is a CFA charterholder.

Education

- B.S. University of Vermont
- M.B.A. Babson College

Experience

- Managed Fund since 2016

Literature

Literature



Fact Sheet

[Download](#) - Last updated: Jun 30, 2024



Commentary/Attribution

[Download](#) - Last updated: Jun 30, 2024



Annual Report

[Download](#)



Full Prospectus

 [Download](#)

 **Q1 Holdings**
[Download](#)

 **Q3 Holdings**
[Download](#)

 **SAI**
[Download](#)

 **Semi-Annual Report**
[Download](#)

 **Summary Prospectus**
[Download](#)



HEADQUARTERS
One Post Office Square
Boston, MA 02110

Investments

[Eaton Vance Funds](#)

[Parametric Funds](#)

[Calvert Funds](#)

[Separately Managed
Accounts](#)

[Closed-End Funds and
Term Trusts](#)

Insights

[Advisory Blog](#)

[The BEAT](#)

[The Advisor Institute](#)

Taxes & Tools

[Investment Tax Center](#)

[Tax Information](#)

[Investment Tax Calculator](#)

[Laddered Investing Interest
Rate Scenario Tool](#)

[Concentrated Stock
Position Calculator](#)

[Tax-Equivalent Yield
Calculator](#)

Resources

[Forms & E-Delivery](#)

[Mutual Funds & Unclaimed
Property](#)

[DST Vision](#)

[Active Advisor](#)

[Corporate Filings](#)

[Annual Reports](#)

[Press Releases](#)

[Diversity and Inclusion](#)

[Proxy Voting](#)

[Accessibility](#) | [Business Continuity](#) | [Privacy & Cookies](#) | [Your Privacy Choices](#)  | [Terms & Conditions](#) | [Careers](#) | [Contact](#) |
[Investor Account Access](#) | [Morgan Stanley Investment Management Terms of Use](#)

Eaton Vance is part of Morgan Stanley Investment Management, the asset management division of Morgan Stanley.

 This image indicates content designed specifically for Financial Advisors / Investment Professionals. This material is not to be used with the public.

Before investing in any Calvert fund, prospective investors should consider carefully the investment objective(s), risks, and charges and expenses. The current prospectus contains this and other information. To obtain a mutual fund prospectus or summary prospectus, contact your financial advisor or [download a copy here](#). Read the prospectus carefully before you invest or send money.

NOT FDIC INSURED | OFFER NO BANK GUARANTEE | MAY LOSE VALUE | NOT INSURED BY ANY FEDERAL GOVERNMENT AGENCY | NOT A DEPOSIT

Effective January 3, 2017, Eaton Vance Distributors, Inc. replaced Calvert Investments Distributors, Inc. ("CID") as the principal underwriter following the acquisition by Calvert Research and Management ("CRM") of substantially all the business assets of Calvert Investment Management, Inc. ("CIM"). CRM has also replaced CIM as the Investment adviser. Eaton Vance Distributors, Inc. does not provide tax or legal advice. Prospective investors should consult with a tax or legal advisor before making any investment decision.

The information on this Web page is for U.S. residents only and does not constitute an offer to sell, or a solicitation of an offer to purchase, securities in any jurisdiction to any person to whom it is not lawful to make such an offer.

© Calvert Research and Management. All rights reserved. Calvert open-end mutual funds are distributed by Eaton Vance Distributors, Inc. One Post Office Square, Boston, MA 02110. Member [FINRA](#) / [SIPC](#)

Publication details: Wednesday, September 18, 2024 3:29 PM

Page ID: CALRX - <https://www.eatonvance.com/calvert-small-cap-fund-calrx.php>