



# Calvert Moderate Allocation Fund (I)

The Fund seeks long-term capital appreciation and growth of income, with current income a secondary objective.

Share Class

**CLAIX**

Symbol

**\$22.28** -\$0.14

NAV as of Jan 15, 2021



**Fact Sheet**

Dec 31, 2020



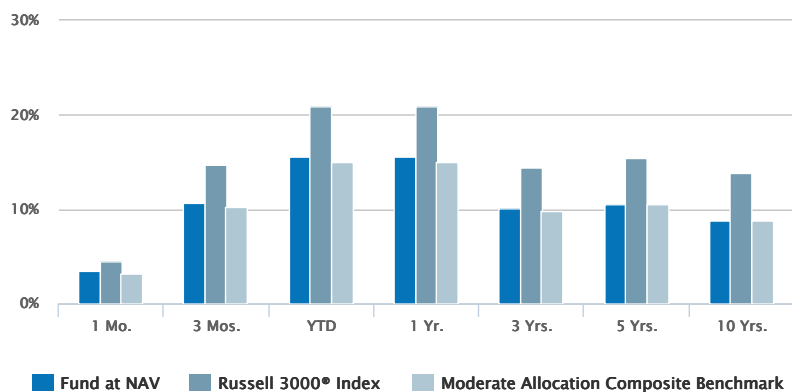
**Commentary**

Sep 30, 2020

## Historical Returns (%)

as of Dec 31, 2020

12/31/2020



Fund at NAV	3.50	10.61	15.51	15.51	10.10	10.52	8.80
Russell 3000® Index <sup>1</sup>	4.50	14.68	20.89	20.89	14.48	15.41	13.78
Moderate Allocation Composite Benchmark <sup>2</sup>	3.20	10.23	14.98	14.98	9.76	10.55	8.77

Past performance is no guarantee of future results. Investment return and principal value will fluctuate so that shares, when redeemed, may be worth more or less than their original cost. Performance is for the stated time period only; due to market volatility, the Fund's current performance may be lower or higher than quoted. Returns are historical and are calculated by determining the percentage change in net asset value (NAV) with all distributions reinvested. Returns for other classes of shares offered by the Fund are different. Performance less than or equal to one year is cumulative. Performance prior to December 31, 2016 reflects the performance of the Fund's former adviser, Calvert Investment Management, Inc. Total return prior to the commencement of the class reflects returns of another Fund class. Prior returns are adjusted to reflect applicable sales charge (but were not adjusted for other expenses). If adjusted for other expenses, returns would be lower. The share class has no sales charge.

## Fund Facts

as of Dec 31, 2020

Class I Inception	05/20/2016
Performance Inception	04/29/2005
Investment Objective	Long-term capital appreciation and growth of income
Total Net Assets	\$391.9M
Minimum Investment	\$250000
Expense Ratio <sup>3</sup>	0.70%
Adjusted Expense Ratio <sup>4</sup>	0.65%
CUSIP	131618654

Adjusted Expense Ratios excludes certain investment expenses such as interest expense from borrowings and repurchase agreements and dividend expense from short sales, incurred directly by the Fund or indirectly through the Fund's investment in underlying Calvert Funds - FRA and Asset Allocation Funds, if applicable none of which are paid to Calvert Funds.

## Top 10 Holdings (%)<sup>5,6</sup>

as of Dec 31, 2020

Calvert US Large Cap Core Responsible Index Fund	13.64
Calvert US Large Cap Value Responsible Index Fund	12.86
Calvert Bond Fund	7.36
Calvert International Equity Fund	6.44
Calvert International Opportunities Fund	6.30
Calvert Emerging Markets Equity Fund	5.44
Calvert Floating-Rate Advantage Fund	4.66
Calvert US Large Cap Growth Responsible Index Fund	4.58
Calvert Ultra-Short Duration Income Fund	4.30
Calvert Emerging Markets Advancement Fund	3.92
<b>Total</b>	<b>69.49</b>

# Morningstar Rating™

as of Dec 31, 2020

Time Period	Rating	Funds in Allocation--50% to 70% Equity Category
Overall	★★★★	636
3 Years	★★★★	636
5 Years	☆☆☆☆	575
10 Years	☆☆☆☆	414

The Morningstar Rating™ for funds, or "star rating", is calculated for managed products (including mutual funds and exchange-traded funds) with at least a three-year history. Exchange-traded funds and open-ended mutual funds are considered a single population for comparative purposes. It is calculated based on a Morningstar Risk-Adjusted Return measure that accounts for variation in a managed product's monthly excess performance, placing more emphasis on downward variations and rewarding consistent performance. The top 10% of products in each product category receive 5 stars, the next 22.5% receive 4 stars, the next 35% receive 3 stars, the next 22.5% receive 2 stars, and the bottom 10% receive 1 star.

The Overall Morningstar Rating for a managed product is derived from a weighted average of the performance figures associated with its three-, five-, and 10-year (if applicable) Morningstar Rating metrics. The weights are: 100% three-year rating for 36-59 months of total returns, 60% five-year rating/40% three-year rating for 60-119 months of total returns, and 50% 10-year rating/30% five-year rating/20% three-year rating for 120 or more months of total returns. While the 10-year overall star rating formula seems to give the most weight to the 10-year period, the most recent three-year period actually has the greatest impact because it is included in all three rating periods. Star ratings do not reflect the effect of any applicable sales load. Hollow stars denote Morningstar Extended Performance Ratings and are considered estimates based on the performance of the fund's oldest share class, adjusted for fees and expenses.

©2020 Morningstar. All Rights Reserved. The information contained herein: (1) is proprietary to Morningstar and/or its content providers; (2) may not be copied or distributed; and (3) is not warranted to be accurate, complete or timely. Neither Morningstar nor its content providers are responsible for any damages or losses arising from any use of this information.

## Portfolio Management

[Dan R. Strelow, CFA, CIPM](#)

[Managed Fund since 2016](#)

[Justin H. Bourgette, CFA](#)

[Managed Fund since 2016](#)

Portfolio profile subject to change due to active management. Percentages may not total 100% due to rounding.

## About Risk:

The Fund invests in other underlying funds in a fund-of-funds structure. The Fund's performance is dependent upon the performance of the underlying funds and the Fund is subject to all of the risks of the underlying funds. The value of investments held by the Fund may increase or decrease in response to economic, and financial events (whether real, expected or perceived) in the U.S. and global markets. The value of equity securities is sensitive to stock market volatility. Investments in debt instruments may be affected by changes in the creditworthiness of the issuer and are subject to the risk of non-payment of principal and interest. The value of income securities also may decline because of real or perceived concerns about the issuer's ability to make principal and interest payments. As interest rates rise, the value of certain income investments is likely to decline. Investments in foreign instruments or currencies can involve greater risk and volatility than U.S. investments because of adverse market, economic, political, regulatory, geopolitical, currency exchange rates or other conditions. Investing primarily in responsible investments carries the risk that, under certain market conditions, the Fund may underperform funds that do not utilize a responsible investment strategy. The Fund is exposed to liquidity risk when trading volume, lack of a market maker or trading partner, large position size, market conditions, or legal restrictions impair its ability to sell particular investments or to sell them at advantageous market prices. The impact of the coronavirus on global markets could last for an extended period and could adversely affect the Fund's performance. No fund is a complete investment program and you may lose money investing in a fund. The Fund may engage in other investment practices that may involve additional risks and you should review the [Fund prospectus](#) for a complete description.

1. Russell 3000® Index is an unmanaged index of the 3,000 largest U.S. stocks. Unless otherwise stated, index returns do not reflect the

effect of any applicable sales charges, commissions, expenses, taxes or leverage, as applicable. It is not possible to invest directly in an index. Historical performance of the index illustrates market trends and does not represent the past or future performance of the fund.

2. The Moderate Allocation Composite Benchmark is an internally constructed benchmark which, as of 04/01/2018, is comprised of a blend of 45% Russell® 3000 Index, 20% MSCI All-Country World Ex US Investable Market Index, and 35% Bloomberg Barclays U.S.

Aggregate Index. Rebalanced Monthly. See the Fund's prospectus for additional information, including past benchmark composition.

3. Source: Fund prospectus.

4. Adjusted Expense Ratios excludes certain investment expenses such as interest expense from borrowings and repurchase agreements and dividend expense from short sales, incurred directly by the Fund or indirectly through the Fund's investment in underlying Calvert Funds - FRA and Asset Allocation Funds, if applicable none of which are paid to Calvert Funds.

5. Top 10 Holdings excludes cash and equivalents.

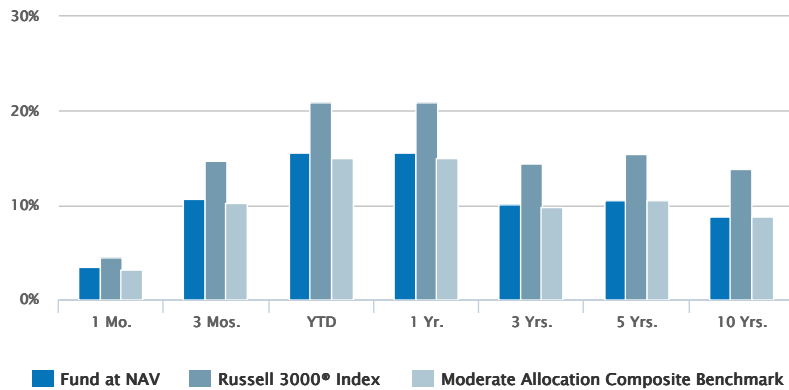
6. Percent of total net assets.

---

## Historical Returns (%)

as of Dec 31, 2020

12/31/2020



Fund at NAV	3.50	10.61	15.51	15.51	10.10	10.52	8.80
Russell 3000® Index <sup>1</sup>	4.50	14.68	20.89	20.89	14.48	15.41	13.78
Moderate Allocation Composite Benchmark <sup>2</sup>	3.20	10.23	14.98	14.98	9.76	10.55	8.77

Past performance is no guarantee of future results. Investment return and principal value will fluctuate so that shares, when redeemed, may be worth more or less than their original cost. Performance is for the stated time period only; due to market volatility, the Fund's current performance may be lower or higher than quoted. Returns are historical and are calculated by determining the percentage change in net asset value (NAV) with all distributions reinvested. Returns for other classes of shares offered by the Fund are different. Performance less than or equal to one year is cumulative. Performance prior to December 31, 2016 reflects the performance of the Fund's former adviser, Calvert Investment Management, Inc. Total return prior to the commencement of the class reflects returns of another Fund class. Prior returns are adjusted to reflect applicable sales charge (but were not adjusted for other expenses). If adjusted for other expenses, returns would be lower. The share class has no sales charge.

## Calendar Year Returns (%)

	2011	2012	2013	2014	2015	2016	2017	2018	2019	2020
Fund at NAV	-0.28	13.04	18.37	6.01	-0.35	6.73	15.07	-5.13	21.19	15.51
Russell 3000® Index <sup>1</sup>	1.03	16.42	33.55	12.56	0.48	12.74	21.13	-5.24	31.02	20.89
Moderate Allocation Composite Benchmark <sup>2</sup>	0.43	12.38	16.67	6.90	-0.29	7.67	15.97	-5.16	21.25	14.98

## Fund Facts

Expense Ratio <sup>3</sup>	0.70%
Adjusted Expense Ratio <sup>4</sup>	0.65%
Class I Inception	05/20/2016
Performance Inception	04/29/2005

Adjusted Expense Ratios excludes certain investment expenses such as interest expense from borrowings and repurchase agreements and dividend expense from short sales, incurred directly by the Fund or indirectly through the Fund's investment in underlying Calvert Funds - FRA and Asset Allocation Funds, if applicable none of which are paid to Calvert Funds.

Adjusted Expense Ratios excludes certain investment expenses such as interest expense from borrowings and repurchase agreements and dividend expense from short sales, incurred directly by the Fund or indirectly through the Fund's investment in underlying Calvert Funds - FRA and Asset Allocation Funds, if applicable none of which are paid to Calvert Funds.

## Morningstar Rating™

as of Dec 31, 2020

Time Period	Rating	Funds in Allocation--50% to 70% Equity Category
Overall	★★★★	636
3 Years	★★★★	636
5 Years	☆☆☆☆	575
10 Years	☆☆☆☆	414

The Morningstar Rating™ for funds, or "star rating", is calculated for managed products (including mutual funds and exchange-traded funds) with at least a three-year history. Exchange-traded funds and open-ended mutual funds are considered a single population for comparative purposes. It is calculated based on a Morningstar Risk-Adjusted Return measure that accounts for variation in a managed product's monthly excess performance, placing more emphasis on downward variations and rewarding consistent performance. The top 10% of products in each product category receive 5 stars, the next 22.5% receive 4 stars, the next 35% receive 3 stars, the next 22.5% receive 2 stars, and the bottom 10% receive 1 star.

The Overall Morningstar Rating for a managed product is derived from a weighted average of the performance figures associated with its three-, five-, and 10-year (if applicable) Morningstar Rating metrics. The weights are: 100% three-year rating for 36-59 months of total returns, 60% five-year rating/40% three-year rating for 60-119 months of total returns, and 50% 10-year rating/30% five-year rating/20% three-year rating for 120 or more months of total returns. While the 10-year overall star rating formula seems to give the most weight to the 10-year period, the most recent three-year period actually has the greatest impact because it is included in all three rating periods. Star ratings do not reflect the effect of any applicable sales load. Hollow stars denote Morningstar Extended Performance Ratings and are considered estimates based on the performance of the fund's oldest share class, adjusted for fees and expenses.

©2020 Morningstar. All Rights Reserved. The information contained herein: (1) is proprietary to Morningstar and/or its content providers; (2) may not be copied or distributed; and (3) is not warranted to be accurate, complete or timely. Neither Morningstar nor its content providers are responsible for any damages or losses arising from any use of this information.

## NAV History

Date	NAV	NAV Change
Jan 15, 2021	\$22.28	-\$0.14
Jan 14, 2021	\$22.42	\$0.02
Jan 13, 2021	\$22.40	\$0.01
Jan 12, 2021	\$22.39	\$0.06
Jan 11, 2021	\$22.33	-\$0.08
Jan 08, 2021	\$22.41	\$0.10
Jan 07, 2021	\$22.31	\$0.15
Jan 06, 2021	\$22.16	\$0.13
Jan 05, 2021	\$22.03	\$0.12
Jan 04, 2021	\$21.91	-\$0.10

## Distribution History<sup>7</sup>

Ex-Date	Distribution	Reinvest NAV
Dec 29, 2020	\$0.18920	\$21.89
Sep 28, 2020	\$0.04570	\$20.63
Jun 26, 2020	\$0.02950	\$19.19
Mar 27, 2020	\$0.03680	\$16.82
Dec 27, 2019	\$0.20100	\$19.97
Sep 26, 2019	\$0.05060	\$19.52
Jun 26, 2019	\$0.06020	\$19.23
Mar 27, 2019	\$0.03840	\$18.67
Dec 28, 2018	\$0.29640	\$17.07
Sep 26, 2018	\$0.05470	\$19.79

[View All](#)

No records in this table indicates that there has not been a distribution greater than .0001 within the past 3 years.

[Fund prospectus](#)

## Capital Gain History<sup>7</sup>

Ex-Date	Short-Term	Long-Term	Reinvest NAV
Dec 29, 2020	\$0.07500	\$0.59430	\$21.89
Dec 27, 2019	\$0.12950	\$0.43420	\$19.97
Dec 28, 2018	\$0.06280	\$0.55750	\$17.07

No records in this table indicates that there has not been a capital gain greater than .0001 within the past 3 years.

[Fund prospectus](#)

Portfolio profile subject to change due to active management. Percentages may not total 100% due to rounding.

## About Risk:

The Fund invests in other underlying funds in a fund-of-funds structure. The Fund's performance is dependent upon the performance of the underlying funds and the Fund is subject to all of the risks of the underlying funds. The value of investments held by the Fund may increase or decrease in response to economic, and financial events (whether real, expected or perceived) in the U.S. and global markets. The value of equity securities is sensitive to stock market volatility. Investments in debt instruments may be affected by changes in the creditworthiness of the issuer and are subject to the risk of non-payment of principal and interest. The value of income securities also may decline because of real or perceived concerns about the issuer's ability to make principal and interest payments. As interest rates rise, the value of certain income investments is likely to decline. Investments in foreign instruments or currencies can involve greater risk and volatility than U.S. investments because of adverse market, economic, political, regulatory, geopolitical, currency exchange rates or other conditions. Investing primarily in responsible investments carries the risk that, under certain market conditions, the Fund may underperform funds that do not utilize a responsible investment strategy. The Fund is exposed to liquidity risk when trading volume, lack of a market maker or trading partner, large position size, market conditions, or legal restrictions impair its ability to sell particular investments or to sell them at advantageous market prices. The impact of the coronavirus on global markets could last for an extended period and could adversely affect the Fund's performance. No fund is a complete investment program and you may lose money investing in a fund. The Fund may engage in other investment practices that may involve additional risks and you should review the [Fund prospectus](#) for a complete description.

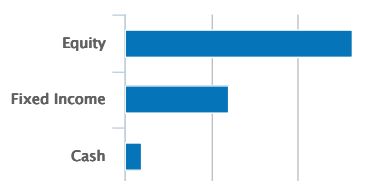
1. Russell 3000® Index is an unmanaged index of the 3,000 largest U.S. stocks. Unless otherwise stated, index returns do not reflect the effect of any applicable sales charges, commissions, expenses, taxes or leverage, as applicable. It is not possible to invest directly in an index. Historical performance of the index illustrates market trends and does not represent the past or future performance of the fund.
  2. The Moderate Allocation Composite Benchmark is an internally constructed benchmark which, as of 04/01/2018, is comprised of a blend of 45% Russell® 3000 Index, 20% MSCI All-Country World Ex US Investable Market Index, and 35% Bloomberg Barclays U.S. Aggregate Index. Rebalanced Monthly. See the Fund's prospectus for additional information, including past benchmark composition.
  3. Source: Fund prospectus.
  4. Adjusted Expense Ratios excludes certain investment expenses such as interest expense from borrowings and repurchase agreements and dividend expense from short sales, incurred directly by the Fund or indirectly through the Fund's investment in underlying Calvert Funds - FRA and Asset Allocation Funds, if applicable none of which are paid to Calvert Funds.
  7. A portion of the Fund's returns may be comprised of return of capital or short term capital gains. The Fund will determine the tax characteristics of all Fund distributions after the end of the calendar year and will provide shareholders such information at that time. Please consult your tax advisor for further information.
-



Asset Mix (%)<sup>6</sup>

as of Dec 31, 2020

12/31/2020



Equity	65.42
Fixed Income	29.70
Cash	4.88
<b>Total</b>	<b>100.00</b>

Fund Holdings (%)<sup>6,8</sup>

as of Nov 30, 2020

Holding	% of Net Assets
Calvert US Large Cap Core Responsible Index Fund	13.57%
Calvert US Large Cap Value Responsible Index Fund	12.88%
Calvert Bond Fund	7.60%
Calvert International Equity Fund	6.37%
Calvert International Opportunities Fund	6.13%
Calvert Emerging Markets Equity Fund	5.27%
Calvert Floating-Rate Advantage Fund	4.78%
CALVERT CASH RESERVES FUND CALVERT CASH RESERVES FUND	4.72%
Calvert US Large Cap Growth Responsible Index Fund	4.54%
Calvert Ultra-Short Duration Income Fund	4.46%

[View All](#)

Portfolio profile subject to change due to active management. Percentages may not total 100% due to rounding.

## About Risk:

The Fund invests in other underlying funds in a fund-of-funds structure. The Fund's performance is dependent upon the performance of the underlying funds and the Fund is subject to all of the risks of the underlying funds. The value of investments held by the Fund may increase or decrease in response to economic, and financial events (whether real, expected or perceived) in the U.S. and global markets. The value of equity securities is sensitive to stock market volatility. Investments in debt instruments may be affected by changes in the creditworthiness of the issuer and are subject to the risk of non-payment of principal and interest. The value of income securities also may decline because of real or perceived concerns about the issuer's ability to make principal and interest payments. As interest rates rise, the value of certain income investments is likely to decline. Investments in foreign instruments or currencies can involve greater risk and volatility than U.S. investments because of adverse market, economic, political, regulatory, geopolitical, currency exchange rates or other conditions. Investing primarily in responsible investments carries the risk that, under certain market conditions, the Fund may underperform funds that do not utilize a responsible investment strategy. The Fund is exposed to liquidity risk when trading volume, lack of a market maker or trading partner, large position size, market conditions, or legal restrictions impair its ability to sell particular

investments or to sell them at advantageous market prices. The impact of the coronavirus on global markets could last for an extended period and could adversely affect the Fund's performance. No fund is a complete investment program and you may lose money investing in a fund. The Fund may engage in other investment practices that may involve additional risks and you should review the [Fund prospectus](#) for a complete description.

6. Percent of total net assets.

8. The following list reflects unaudited securities holdings (excluding derivatives positions). Holdings information may differ if presented as of trade date. Due to rounding, holdings of less than 0.005% may show as 0.00%. Portfolio information subject to change due to active management.

---



**Dan R. Strelow, CFA, CIPM**  
Portfolio Manager

## Biography

Dan Strelow is a vice president and portfolio manager for Calvert Research and Management, a wholly owned subsidiary of Eaton Vance Management specializing in responsible and sustainable investing across global capital markets. He joined Calvert Research and Management in 2016.

Dan began his career in the investment management industry in 1981. He has been affiliated with the Eaton Vance organization since 2005. Before joining the Eaton Vance organization, he was a managing director, CIO of fixed income and fixed-income portfolio manager with State Street Research and Management. He was previously affiliated with First Chicago Investment Advisors.

Dan earned a B.A. in economics, magna cum laude, from Pacific Lutheran University and an MBA in finance from the University of Chicago Booth School of Business. He has published various white papers including "Pension Management In A World of Balance" (October 2005), "Solving the Pension Management Riddle" (December 2006), "The Slow March to LDI" (July 2007) and "LDI: More Than Duration-Matching" (Institutional Investor magazine 2008). He is a CFA charterholder and holds the Certificate in Investment Performance Measurement (CIPM) designation.

---

## Education

- B.A. Pacific Lutheran University
- M.B.A Booth School of Business, University of Chicago

## Experience

- Managed Fund since 2016
- 



**Justin H. Bourgette, CFA**  
Portfolio Manager

## Biography

Justin Bourgette is a vice president and portfolio manager for Calvert Research and Management, a wholly owned subsidiary of Eaton Vance Management specializing in responsible and sustainable investing across global capital markets. He joined Calvert Research and Management in 2016.

Justin began his career in the investment management industry in 2006. He has been affiliated with the Eaton Vance organization since 2006. Before joining the Eaton Vance organization, he was affiliated with Investors Financial Services as an analyst in corporate finance and with National Grid, where he worked in business planning and engineering.

Justin earned a B.S. from Worcester Polytechnic Institute and an M.S., with high honors, from Boston University. He is a CFA charterholder and a member of Eaton Vance's Asset Allocation Committee.

---

## Education

- B.S. Worcester Polytechnic Institute
- M.S. Investment Management, Boston University

## Experience

- Managed Fund since 2016
-

## Literature

---



### Fact Sheet

[Download](#) - Last updated: Dec 31, 2020

---



### Commentary

[Download](#) - Last updated: Sep 30, 2020

---



### Annual Report

[Download](#) - Last updated: Sep 30, 2020

---



### Calvert Responsible Funds Overview

[Download](#) - Last updated: Sep 30, 2020

---



### Full Prospectus

[Download](#) - Last updated: Feb 1, 2020

---



### Q1 Holdings

[Download](#) - Last updated: Dec 31, 2019

---



### Q3 Holdings

[Download](#) - Last updated: Jun 30, 2020

---



### Holdings - Form N-PORT

[Download](#)

---



### Proxy Statement

[Download](#) - Last updated: Dec 30, 2020

---



### SAI

[Download](#) - Last updated: Feb 1, 2020

---



### Semi-Annual Report

[Download](#) - Last updated: Mar 31, 2020

---



### Summary Prospectus

[Download](#) - Last updated: Feb 1, 2020

---



**HEADQUARTERS**

Two International Place  
Boston, MA 02110

Investments

[Eaton Vance Funds](#)

[Parametric Funds](#)

[Calvert Funds](#)

[Separately Managed  
Accounts](#)

[Closed-End Funds and Term  
Trusts](#)

Insights

[Advisory Blog](#)

[Monthly Market Monitor](#)

[Market Update Events](#)

[Eaton Vance on Washington](#)

[Market Views](#)

[The Advisor Institute](#)

Taxes & Tools

[Investment Tax Center](#)

[Tax Information](#)

[Investment Tax Calculator](#)

[Laddered Investing Interest  
Rate Scenario Tool](#)

[Concentrated Stock Position  
Calculator](#)

[Tax-Equivalent Yield  
Calculator](#)

Resources

[Mutual Fund Sales Charges](#)

[Parametric Sales Charges](#)

[Forms & E-Delivery](#)

[Fund Corporate Governance](#)

[Proxies](#)

[Mutual Funds & Abandoned  
Property](#)

[DST Vision](#)

[AdvisorCentral](#)

<a href="#">Accessibility</a>	<a href="#">Business Continuity</a>	<a href="#">Privacy &amp; Security</a>	<a href="#">Terms &amp; Conditions</a>	<a href="#">Careers</a>	<a href="#">Contact</a>	<a href="#">Investor Account Access</a>
-------------------------------	-------------------------------------	--	--	-------------------------	-------------------------	---

This image indicates content designed specifically for Financial Advisors / Investment Professionals. This material is not to be used with the public.

Before investing in any Calvert fund, prospective investors should consider carefully the investment objective(s), risks, and charges and expenses. The current prospectus contains this and other information. To obtain a mutual fund prospectus or summary prospectus, contact your financial advisor or download a copy [here](#). Read the prospectus carefully before you invest or send money.

Not FDIC Insured. No Bank Guarantee. May Lose Value.

Effective January 3, 2017, Eaton Vance Distributors, Inc. replaced Calvert Investments Distributors, Inc. ("CID") as the principal underwriter following the acquisition by Calvert Research and Management ("CRM") of substantially all the business assets of Calvert Investment Management, Inc. ("CIM"). CRM has also replaced CIM as the Investment adviser. Eaton Vance Distributors, Inc. does not provide tax or legal advice. Prospective investors should consult with a tax or legal advisor before making any investment decision.

The information on this Web page is for U.S. residents only and does not constitute an offer to sell, or a solicitation of an offer to purchase, securities in any jurisdiction to any person to whom it is not lawful to make such an offer.

© Calvert Research and Management. All rights reserved. Calvert open-end mutual funds are distributed by Eaton Vance Distributors, Inc. Two International Place, Boston, MA 02110. Member [FINRA](#) / [SIPC](#)

Publication details: Tuesday, January 5, 2021 10:49 AM

Page ID: 24186 - <https://funds.eatonvance.com/Calvert-Moderate-Allocation-Fund-CLAIX.php>