

The views expressed in these posts are those of the authors and are current only through the date stated. These views are subject to change at any time based upon market or other conditions, and Eaton Vance disclaims any responsibility to update such views. These views may not be relied upon as investment advice and, because investment decisions for Eaton Vance are based on many factors, may not be relied upon as an indication of trading intent on behalf of any Eaton Vance fund. The discussion herein is general in nature and is provided for informational purposes only. There is no guarantee as to its accuracy or completeness.

CALVERT INSIGHTS

Property Insurance: The Canary in the Coal Mine for Physical Climate Risk

By: Pietro Marchesano | February 15, 2024

The urgent need to reduce emissions has recently drawn a high level of scrutiny and interest from the financial services sector. Although physical climate risk is often mentioned less than transition risk, its effects will become increasingly evident over time. The insurance industry offers an important perspective on the evolving materiality of physical risk and ways to address it.

Property insurance helps society recoup the economic losses associated with natural disasters. As such, re/insurance companies that offer property coverage play a critical role in enabling economies and populations to adapt to accelerating climate change. As responsible investors, our exposure to this industry is relevant for two reasons. First, it provides us with valuable insights into how, where, and when physical climate risk is manifesting itself in financially material ways. Second, it gives us the opportunity to allocate capital to help address the societal challenges stemming from changing weather patterns.

Economic Costs Rise Along with Natural Disasters

Over the last 20 years, the number of global natural disasters has increased from approximately 340 to 400 in 2023. The frequency of these events has increased in every world region; but in the U.S. this has been particularly pronounced with the number of natural disasters almost doubling - from about 50 in the early 2000s to almost 100 in the last few years.¹

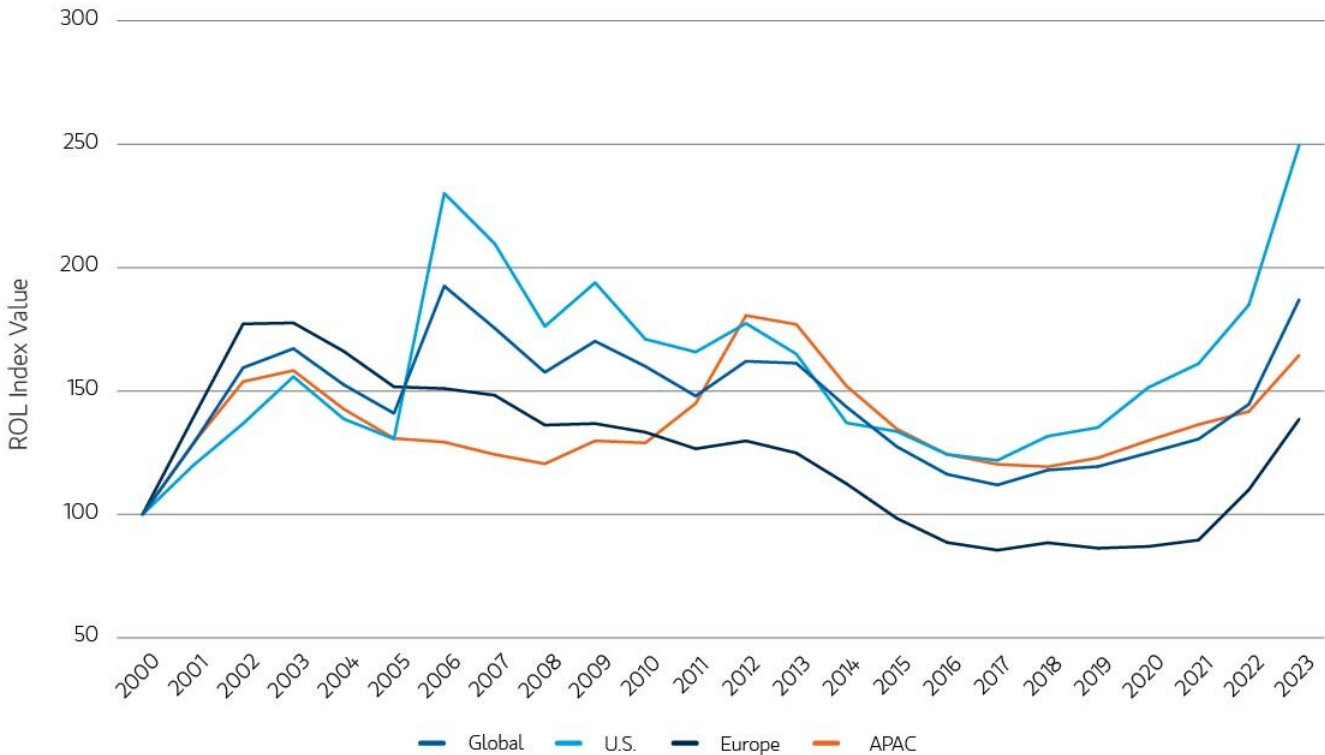
This trend has had negative impacts both across the global economy and within the insurance industry. Aggregate insured losses for the industry rose from \$26 billion in 2000 to \$118 billion in 2023 and reached well over \$100 billion in six of the last ten years.²

Rocketing Costs of Catastrophe Coverage

To navigate this environment, the re/insurance industry has leveraged the demand from investors for high, uncorrelated returns to tap opportunities in the catastrophe bond market.³ Since 2000, nominal issuances of property catastrophe bonds increased almost twentyfold, reaching \$15 billion in 2023.⁴ This has helped diversify and expand the pool of capital to mitigate physical climate risk, beyond the organic capacity of the industry players themselves. However, the influx of external capital has not been sufficient to offset the depletion in reserves driven by the rising frequency and severity of climate disasters, and the recent surge in global inflation.

These conditions have ignited an unprecedented acceleration in the price of catastrophe coverage in the reinsurance market. Property catastrophe reinsurance rates increased over 29% globally in 2023, up for six consecutive years. In the U.S., this dynamic is particularly acute, with rates doubling from 2017 to 2023, reaching their highest level ever.⁵

Property Catastrophe Rate on Line Index



In view of these factors, we believe that:

- North America is increasingly vulnerable to changing weather patterns. Calvert's exposure to re/insurers operating in this region allows us to partner with firms that we believe stand to benefit the most from our regular dialogue as responsible shareholder. Nonetheless, we are aware of the investment downside associated with physical climate risk. Therefore, we favor issuers that provide transparent and detailed disclosures about: i) their track record in mitigating this risk; ii) their property exposures to high-risk areas; and iii) their strategy to remain profitable while supporting societal adaptation to climate change.
- Although the inverse relationship between volumes and prices is an intrinsic and recurring feature of insurance cycles - and therefore, it is fair to expect a reversal of this dynamic - climate change is not likely to be mean-reverting in the medium term. Therefore, while maintaining a balanced exposure across the industry, we believe that reinsurers are better positioned than primary insurers to capitalize on this trend. This is rooted in their ability to act as price makers if changing weather patterns continue to affect the profitability of the property segment, and insurance capital remains scarce.

Bottom line: The insurance industry provides valuable insights into the impacts of climate change. North America appears increasingly vulnerable to changing weather patterns, presenting significant opportunities for responsible investors, as well as some risk. We seek to mitigate the risks by requiring strong disclosures and strategic positioning from the re/insurance companies we invest in. At a higher level, we believe that climate change is an issue that will likely lead to a recurring scarcity of insurance capital available to cover property risks. Against this backdrop, reinsurers appear to have a structural advantage relative to primary insurers.

1. Aon, December 31, 2023. Aon classifies an event as a natural disaster if it meets at least one of the following criteria: i) economic loss >\$50m; ii) insured loss > \$25m; iii) fatalities >10; iv) injured >50; v) structures damaged or filed claims >2,000. The time series includes earthquake-related events, which are not caused by climate change but whose frequency has not increased in the period under consideration.

2. Aon, "Climate and Catastrophe Insight," 2024.

3. Catastrophe bonds are high-yield securities designed to raise money for companies in the insurance industry in the event of a natural disaster.

4. ARTEMIS Catastrophe Bond & ILS Market Dashboard

5. Guy Carpenter US Property Catastrophe Rate-On-Line Index, 2000-2023. The Guy Carpenter ROL index is a measure of the change in dollars paid for coverage year on year on a consistent program base.



Pietro Marchesano
ESG Research Analyst
Calvert Research and
Management

"The insurance industry offers an important perspective on the evolving materiality of physical risk and ways to address it."



Marketing Communication

To report a website vulnerability, please go to [Responsible Disclosure](#).

Eaton Vance is part of Morgan Stanley Investment Management, the asset management division of Morgan Stanley.

This website is operated by MSIM Fund Management (Ireland) Limited (MSIM FMIL). The business of Eaton Vance Global Advisors Limited was transferred to MSIM FMIL on 1 October 2021. MSIM Fund Management (Ireland) Limited has been appointed as management company of the Eaton Vance International (Ireland) Funds plc and is responsible for the distribution of the funds together with the distribution of Eaton Vance strategies and strategies of Eaton Vance affiliates. For any queries in respect of the products and strategies referred to on this website, please contact MSIM FMIL at 7-11 Sir John Rogerson's Quay, Dublin 2, D02 VC42, Ireland. MSIM FMIL is regulated by the Central Bank of Ireland with Company Number: 616661.

The value of your investment can go up or down so you may get back less than your initial investment. Past performance is not a guide to future returns.

The information on this webpage is not intended for U.S. residents. To visit our U.S. website [please click here](#).

Eaton Vance Management (Registration No. 1121368) and Parametric Portfolio Associates (Registration No. 1217626) are the registered trade marks of Eaton Vance.