

The views expressed in these posts are those of the authors and are current only through the date stated. These views are subject to change at any time based upon market or other conditions, and Eaton Vance disclaims any responsibility to update such views. These views may not be relied upon as investment advice and, because investment decisions for Eaton Vance are based on many factors, may not be relied upon as an indication of trading intent on behalf of any Eaton Vance fund. The discussion herein is general in nature and is provided for informational purposes only. There is no guarantee as to its accuracy or completeness.

Unsere Emerging Markets und Global Income Inhalte sind auf Deutsch verfügbar.

## [VOLATILITY](#)

# 200 Years of Data Affirm Our Long-Term Confidence in the 60/40 Portfolio

By: Jitania Kandhari | April 15, 2024

## KEY POINTS

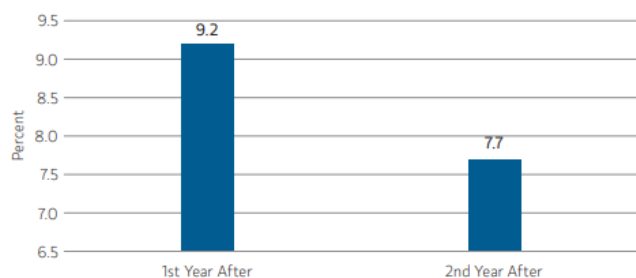
1. The 60/40 portfolio experienced a rollercoaster ride, down 17.5% in 2022 and up 17.2% in 2023.<sup>1</sup>
2. Whenever U.S. inflation exceeded 2.4%, there was an increase in the median correlation between stock and bond returns.
3. Two hundred years of historical analysis suggests there is an 80% probability of positive returns in the two years following a year of negative returns for both stocks and bonds.

The 60/40 portfolio, defined here as a mix of 60% U.S. equities and 40% U.S. Treasury bonds<sup>1</sup>, experienced a rollercoaster ride, dipping 17.5% in 2022 and rising 17.2% in 2023. Many market participants, perhaps fueled by a recency bias<sup>2</sup> belief that the declines of 2022 would persist, questioned the value of the traditional strategy. In our view, those concerns were overstated.

Since 2000, bonds often offered an effective hedge against equity-led losses. However, this dynamic dramatically changed in 2022 when both bonds and stocks produced negative returns, resulting in the worst performance of the 60/40 portfolio since 1937.

### Returns of 60/40 Seen Improving in the Two Years Following Sharply Negative Returns for Both Equities and Bonds

60/40 median returns in year 1 and year 2 post a year when both are negative. Past performance is no guarantee of future results.



Source: MSIM, Bloomberg, FactSet, Haver. As of December 31, 2023. Data is based on historical trends and is subject to change. The information is not intended to predict the future performance of any specific investment or Morgan Stanley product.

A unique set of circumstances led to the challenging 2022 macro conditions, and we had predicted that the 60/40 strategy would rebound. Two-hundred years of historical analysis suggests there is an 80% probability of positive returns in the two years following a year of negative returns for both stocks and bonds. Last year, stocks surged with the S&P, gaining 26.3%, and U.S. 10-year treasuries rose 3.6%. As a result, the 60/40 mix returned 17.2%, far above its historical annual median return of +7.8%.

Analyzing the data reveals inflation has been the most important driver of the correlation between stocks and bonds: whenever U.S. inflation exceeded 2.4%, there was an increase in the median correlation between stock and bond returns. We believe that a drop in inflation in 2024 will lead to lower correlation between stocks and bonds, increasing the diversification benefits and lowering downside risk. Moreover, our analysis of second-year returns following a year when both asset classes yielded a negative return, like in 2022, indicates a likelihood of positive returns for this combination in 2024.

## Bottom Line:

We believe this broader contextual analysis, drawing on 200 years of data, provides a valuable roadmap for investors to consider the benefits of a 60/40 portfolio. Despite some skepticism following the challenges of 2022, we believe a 60/40 strategy remains relevant.

<sup>1</sup>U.S. equities are represented by the S&P 500 Total Return Index (1926-Present) and the U.S. Market Total Return index (1820-1925), with data provided by Global Financial Data (GFD); U.S. Bonds are represented by 10-year U.S. Treasury Total Returns (1820-Present), with data provided by GFD. Index definitions can be found in the disclosure section. The indexes do not include any expenses, fees or sales charges, which would lower performance. The index is unmanaged and should not be considered an investment. It is not possible to invest directly in an index.

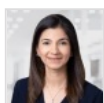
<sup>2</sup>Recency bias is making decisions based on recent events, expecting that those events will persist in the future.

## Risk Considerations

*There is no assurance that a portfolio will achieve its investment objective. Portfolios are subject to market risk, which is the possibility that the market values of securities owned by the portfolio will decline and that the value of portfolio shares may therefore be less than what you paid for them. Asset allocation/Diversification does not protect you against a loss in a particular market; however it allows you to spread that risk across various asset classes. In general, equities securities' values fluctuate in response to activities specific to a company. Fixed income securities are subject to the ability of an issuer to make timely principal and interest payments (credit risk), changes in interest rates (interest-rate risk), the creditworthiness of the issuer and general market liquidity (market risk). In a rising interest-rate environment, bond prices may fall and may result in periods of volatility and increased portfolio redemptions. In a declining interest-rate environment, the portfolio may generate less income. Longer-term securities may be more sensitive to interest rate change.*

*The S&P 500® Index measures the performance of the large cap segment of the U.S. equities market, covering approximately 75% of the U.S. equities market. The Index includes 500 leading companies in leading industries of the U.S. economy.*

*Past performance is no guarantee of future results.*



Jitania Kandhari  
Head of Macro and  
Thematic Research  
Emerging Markets Equity

"A unique set of circumstances led to the challenging 2022 macro conditions, and we had predicted that the 60/40 strategy would rebound."



## Marketing Communication

To report a website vulnerability, please go to [Responsible Disclosure](#).

Eaton Vance is part of Morgan Stanley Investment Management, the asset management division of Morgan Stanley.

This website is operated by MSIM Fund Management (Ireland) Limited (MSIM FMIL). The business of Eaton Vance Global Advisors Limited was transferred to MSIM FMIL on 1 October 2021. MSIM Fund Management (Ireland) Limited has been appointed as management company of the Eaton Vance International (Ireland) Funds plc and is responsible for the distribution of the funds together with the distribution of Eaton Vance strategies and strategies of Eaton Vance affiliates. For any queries in respect of the products and strategies referred to on this website, please contact MSIM FMIL at 7-11 Sir John Rogerson's Quay, Dublin 2, D02 VC42, Ireland. MSIM FMIL is regulated by the Central Bank of Ireland with Company Number: 616661.

The value of your investment can go up or down so you may get back less than your initial investment. Past performance is not a guide to future returns.

The information on this webpage is not intended for U.S. residents. To visit our U.S. website [please click here](#).

Eaton Vance Management (Registration No. 1121368) and Parametric Portfolio Associates (Registration No. 1217626) are the registered trade marks of Eaton Vance.