

Eaton Vance Parametric Emerging Markets Fund

A Acc USD 

12.23  -0.30

NAV as of Nov 26, 2021

Share Class



Fact Sheet (English)

Oct 31, 2021



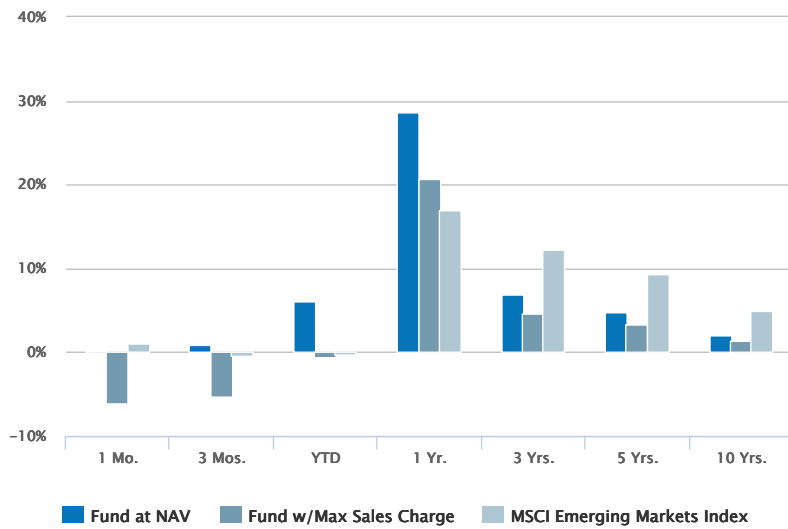
Commentary (English)

Sep 30, 2021

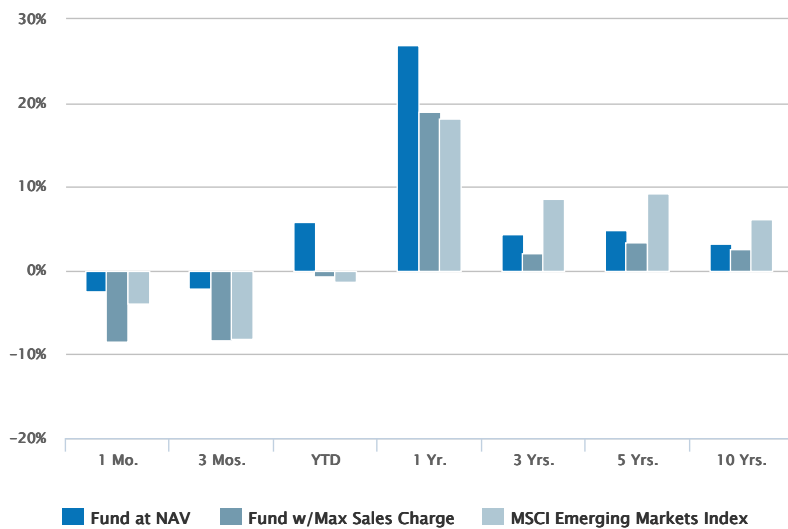
Historical Returns (%)

as of Sep 30, 2021

10/31/2021



09/30/2021



10/31/2021

Fund at NAV	0.16	0.95	6.06	28.70	6.86	4.73	1.94
Fund w/Max Sales Charge	-6.10	-5.33	-0.54	20.68	4.59	3.38	1.29
MSCI Emerging Markets Index ¹	0.99	-0.49	-0.27	16.96	12.29	9.39	4.87

09/30/2021

Fund at NAV	-2.45	-2.22	5.89	26.84	4.38	4.78	3.16
Fund w/Max Sales Charge	-8.53	-8.33	-0.70	18.92	2.15	3.45	2.50
MSCI Emerging Markets Index ¹	-3.97	-8.09	-1.25	18.20	8.58	9.23	6.08

Fund Facts

as of Oct 31, 2021

Class A Acc USD Inception	07/28/2008
Investment Objective	Long-term capital appreciation
Total Net Assets	\$221.1M
Minimum Investment	\$1000

Top 10 Holdings (%)^{2,3}

as of Oct 31, 2021

TENCENT HOLDINGS LTD	1.14
CIA DE MINAS BUENAVENTUR-ADR	0.79
TAIWAN SEMICONDUCTOR MANUFAC	0.77
TUPRAS-TURKIYE PETROL RAFINE	0.74
SAMSUNG ELECTRONICS CO LTD	0.71
YANDEX NV-A	0.68
PNOTE HSBC: Saudi Arabian Oil Co 12/06/21	0.65
AMERICA MOVIL SAB DE C-SER L	0.61
AHLI UNITED BANK B.S.C	0.57
NASPERS LTD-N SHS	0.57
Total	7.22

1. The MSCI Emerging Markets Index is an unmanaged index of emerging markets common stocks. Unless otherwise stated, index returns do not reflect the effect of any applicable sales charges, commissions, expenses, taxes or leverage, as applicable. It is not possible to invest directly in an index. Historical performance of the index illustrates market trends and does not represent the past or future performance of the fund. MSCI indices are net of foreign withholding taxes. Source: MSCI. MSCI data may not be reproduced or used for any other purpose. MSCI provides no warranties, has not prepared or approved this report, and has no liability hereunder.

2. Top 10 Holdings excludes cash and equivalents.

3. Per cent of total net assets.

Fund Codes

CUSIP	G2918S520
ISIN	IE00B2NF8N44
SEDOL	B2NF8N4
Valor Number	4236338
Wertpapierkennnummer	A0Q8WC

The portfolio profile is subject to change due to active management. Percentages may not total 100 % due to rounding.

About Risk:

The value of equity securities is sensitive to stock market volatility. Investments in foreign instruments or currencies can involve greater risk and volatility than U.S. investments because of adverse market, economic, political, regulatory, geopolitical, currency exchange rates or other conditions. In emerging countries, these risks may be more significant. No fund is a complete investment program and you may lose money investing in a fund. The Fund may engage in other investment practices that may involve additional risks and you should review the [Fund prospectus](#) for a complete description.

Performance

Historical Returns (%)

as of Sep 30, 2021

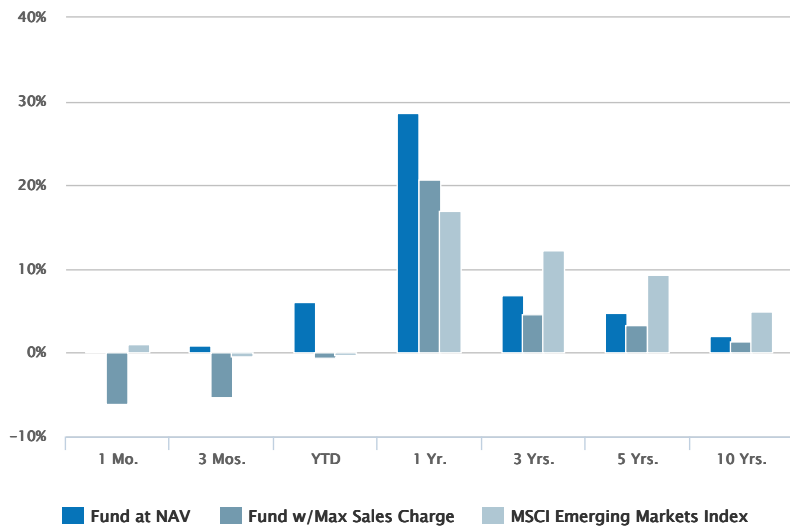
10/31/2021

Portf

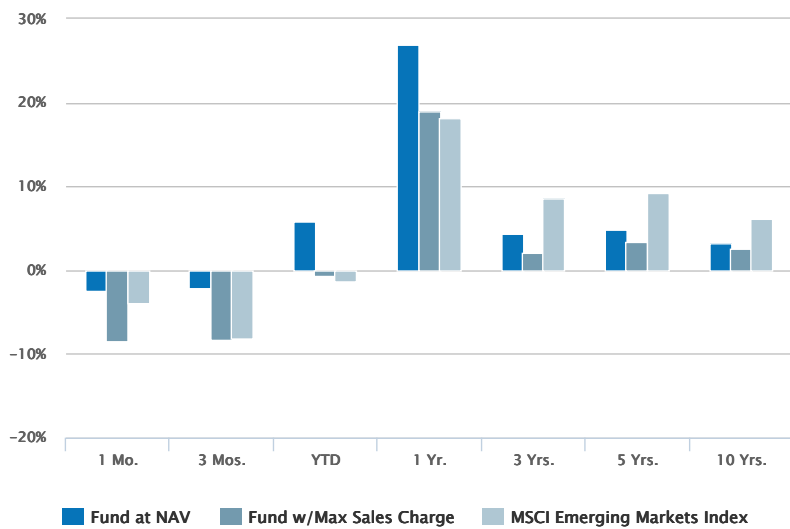
Thomas C.

Paul Bouch

Jennifer Si



09/30/2021



10/31/2021

Fund at NAV	0.16	0.95	6.06	28.70	6.86	4.73	1.94
Fund w/Max Sales Charge	-6.10	-5.33	-0.54	20.68	4.59	3.38	1.29
MSCI Emerging Markets Index ¹	0.99	-0.49	-0.27	16.96	12.29	9.39	4.87
09/30/2021							
Fund at NAV	-2.45	-2.22	5.89	26.84	4.38	4.78	3.16
Fund w/Max Sales Charge	-8.53	-8.33	-0.70	18.92	2.15	3.45	2.50
MSCI Emerging Markets Index ¹	-3.97	-8.09	-1.25	18.20	8.58	9.23	6.08

Calendar Year Returns (%)

	2011	2012	2013	2014	2015	2016	2017	2018	2019	2020
Fund at NAV	-19.80	18.10	0.80	-5.10	-18.06	10.73	25.92	-14.99	11.34	3.17
MSCI Emerging Markets Index ¹	-18.42	18.22	-2.60	-2.19	-14.92	11.19	37.28	-14.57	18.42	18.31

Fund Facts

Class A Acc USD Inception

07/28/2008

NAV History

Date

Nov 24, 2021	\$
Nov 23, 2021	\$
Nov 22, 2021	\$
Nov 19, 2021	\$
Nov 18, 2021	\$
Nov 17, 2021	\$
Nov 16, 2021	\$
Nov 15, 2021	\$
Nov 12, 2021	\$
Nov 11, 2021	\$

Distribution History⁴

Ex-Date

Distribution

Reinvest NAV

No records in this table indicates that there has not been a distribution greater than .0001 within the past 3 years.

[Fund prospectus](#)

The portfolio profile is subject to change due to active management. Percentages may not total 100 % due to rounding.

About Risk:

The value of equity securities is sensitive to stock market volatility. Investments in foreign instruments or currencies can involve greater risk and volatility than U.S. investments because of adverse market, economic, political, regulatory, geopolitical, currency exchange rates or other conditions. In emerging countries, these risks may be more significant. No fund is a complete investment program and you may lose money investing in a fund. The Fund may engage in other investment practices that may involve additional risks and you should review the [Fund prospectus](#) for a complete description.

1. The MSCI Emerging Markets Index is an unmanaged index of emerging markets common stocks. Unless otherwise stated, index returns do not reflect the effect of any applicable sales charges, commissions, expenses, taxes or leverage, as applicable. It is not possible to invest directly in an index. Historical performance of the index illustrates market trends and does not represent the past or future performance of the fund. MSCI indices are net of foreign withholding taxes. Source: MSCI. MSCI data may not be reproduced or used for any other purpose. MSCI provides no warranties, has not prepared or approved this report, and has no liability hereunder.

4. A portion of the Fund's returns may be comprised of return of capital or short-term capital gains. The Fund will determine the tax characteristics of all Fund distributions after the end of the calendar year and will provide shareholders with such information at that time. Please consult your tax advisor for further information.

Portfolio

Asset Mix (%)³

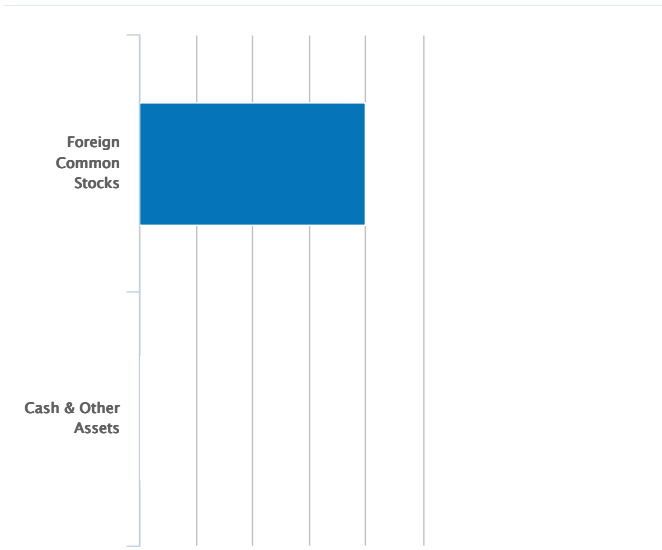
as of Oct 31, 2021

10/31/2021

Portfolio Statistics

as of Oct 31, 2021

Median Market Cap	\$3.8B
Price/Earnings Ratio	13.21
Number of Holdings	1,101



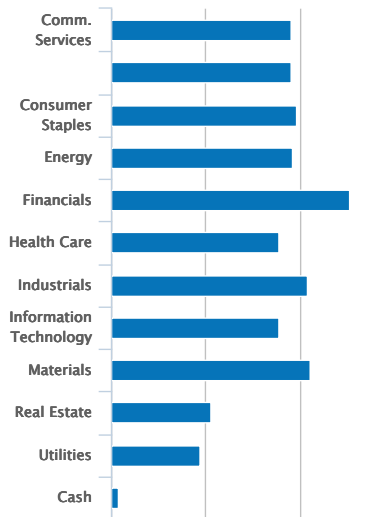
Foreign Common Stocks	99.64
Cash & Other Assets	0.36
Total	100.00

Price/Book Ratio	1.53
Countries Represented	50

GICS Sector Breakdown (%)³

as of Oct 31, 2021

10/31/2021



Comm. Services	9.50	10.58
Consumer Discretionary	9.51	15.55
Consumer Staples	9.82	5.82
Energy	9.57	5.77
Financials	12.62	19.64
Health Care	8.85	4.56
Industrials	10.35	4.73
Information Technology	8.90	20.68
Materials	10.55	8.53

Assets by Country (%)³

as of Oct 31, 2021

China	18.91
India	4.71
Russia	5.11
Taiwan	4.65
Korea	4.55
Mexico	4.55
South Africa	5.10
Turkey	4.82
Thailand	4.51
Saudi Arabia	4.75

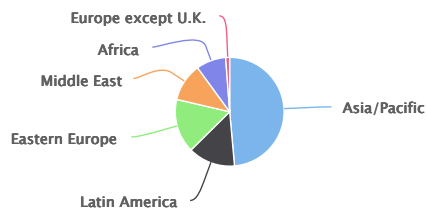
[View All](#)

Real Estate	5.30	1.99
Utilities	4.69	2.16
Cash	0.36	—

Geographic Mix (%)³

as of Oct 31, 2021

10/31/2021



Asia/Pacific	48.58
Latin America	14.01
Eastern Europe	16.06
Middle East	11.31
Africa	8.85
Europe except U.K.	1.19

Fund Holdings (%)^{3,5}

as of Sep 30, 2021

Holding	% of Net Assets
United States Dollar	1.10%
Tencent Holdings Ltd	1.08%
Taiwan Semiconductor Manufacturing Co Ltd	0.74%
Samsung Electronics Co Ltd	0.73%
Turkiye Petrol Rafinerileri AS	0.66%
Yandex NV	0.65%
Cia de Minas Buenaventura SAA	0.65%
HSBC Bank PLC	0.62%
America Movil SAB de CV	0.61%

[View All](#)

Ahli United Bank BSC

0.55%

[View All](#)

The portfolio profile is subject to change due to active management. Percentages may not total 100 % due to rounding.

About Risk:

The value of equity securities is sensitive to stock market volatility. Investments in foreign instruments or currencies can involve greater risk and volatility than U.S. investments because of adverse market, economic, political, regulatory, geopolitical, currency exchange rates or other conditions. In emerging countries, these risks may be more significant. No fund is a complete investment program and you may lose money investing in a fund. The Fund may engage in other investment practices that may involve additional risks and you should review the [Fund prospectus](#) for a complete description.

1. The MSCI Emerging Markets Index is an unmanaged index of emerging markets common stocks. Unless otherwise stated, index returns do not reflect the effect of any applicable sales charges, commissions, expenses, taxes or leverage, as applicable. It is not possible to invest directly in an index. Historical performance of the index illustrates market trends and does not represent the past or future performance of the fund. MSCI indices are net of foreign withholding taxes. Source: MSCI. MSCI data may not be reproduced or used for any other purpose. MSCI provides no warranties, has not prepared or approved this report, and has no liability hereunder.

3. Per cent of total net assets.

5. The following list reflects unaudited securities holdings (excluding derivatives positions). Holdings information may differ if presented as of the trade date. Due to rounding, holdings of less than 0.005 % may show as 0.00 %. Portfolio information is subject to change due to active management.

Management



Thomas C. Seto

Head of Investment Management
Parametric Seattle Investment Centre
Joined Parametric Portfolio Associates in
1998

Biography

Thomas Seto is head of investment management with Parametric Portfolio Associates LLC, an investment adviser and majority-owned subsidiary of Eaton Vance Corp. Tom is responsible for all portfolio management and trading at the Seattle Investment Center, and is a member of the executive committee. He joined Parametric in 1998.

Tom began his career in the investment management industry in 1991. Before joining Parametric, he served as the head of U.S. equity index investments at Barclays Global Investors.

Tom earned a B.S. in electrical engineering from the University of Washington and an MBA from the University of Chicago Booth School of Business.

Education

- B.S. University of Washington
- M.B.A Booth School of Business, University of Chicago

Experience

- Managed Fund since 2008



Paul Bouchey, CFA

Global Head of Research
Parametric Seattle Investment Center
Joined Parametric Portfolio Associates in
2006

Biography

Paul Bouchey is chief investment officer of Parametric Portfolio Associates LLC, an investment adviser and majority-owned subsidiary of Eaton Vance Corp. Paul Bouchey leads Parametric's Investment, Research and Strategy activities. He is responsible for setting the overall research agenda and new product development. He joined Parametric in 2006.

Paul began his career in the investment management industry in 1994. Before joining Parametric, Paul was a senior researcher at Russell Investment Group, where he focused on simulation, optimization and quantitative decision models for institutional and private clients.

Paul earned a B.A. in mathematics and physics from Whitman College and an M.S. in computational finance and risk management from the University of Washington. He holds a patent on cross-sectional volatility indexing and has authored more than 10 academic and practitioner articles in journals such as The Journal of Portfolio Management, The Journal of Wealth Management and The Journal of Index Investing. He is a CFA charterholder.

Education

- B.A. Whitman College
- M.S. University of Washington

Experience

- Managed Fund since 2019



Jennifer Sireklove, CFA

Managing Director, Investment Strategy
Parametric Seattle Investment Center
Joined Parametric Portfolio Associates 2013

Biography

Jennifer Sireklove is managing director, investment strategy for Parametric Portfolio Associates LLC, an investment adviser and majority-owned subsidiary of Eaton Vance Corp. She leads the investment strategy team, which is responsible for all aspects of Parametric's equity-based investment strategies. In addition, she has direct investment responsibility for Parametric's emerging-market and international strategies, and chairs Parametric's Stewardship Committee. She joined Parametric in 2013.

Jennifer began her career in the investment management industry in 2003. Previously at Parametric, she helped build the firm's active ownership and custom ESG portfolio construction practices. Before joining Parametric, she worked in equity research, primarily covering the energy, utility and industrial sectors at firms including D.A. Davidson and McAdams Wright Ragen.

Jennifer earned a B.A. in economics from Reed College and an MBA in finance and accounting from the University of Chicago. She is a CFA charterholder and a member of the CFA Society Seattle.

Education

- B.A. Reed College
- MBA University of Chicago

Experience

- Managed Fund since 2019

Literature

Literature



Fact Sheet (English)

[Download](#) - Last updated: Oct 31, 2021



Commentary (English)

[Download](#) - Last updated: Sep 30, 2021



Annual Report (English)

[Download](#) - Last updated: Dec 31, 2020



Annual Report (Swiss German)

[Download](#) - Last updated: Dec 31, 2020



Eaton Vance International (Ireland) Funds Full Prospectus (Switzerland - German)

[Download](#) - Last updated: Oct 1, 2021



Eaton Vance Global Advisors Limited Privacy Statement

[Download](#) - Last updated: Apr 17, 2018



Important Documents including Key Investor Information Documents (KIID)

[Download](#)



Prospectus Supplement (German)

[Download](#) - Last updated: Oct 1, 2021



Semiannual Report (English)

[Download](#) - Last updated: Jun 30, 2021



Semiannual Report (Swiss German)

[Download](#) - Last updated: Jun 30, 2021



[Insights](#)

[Strategies](#)

[Funds](#)

[About](#)

[Contact](#)

**INTERNATIONAL
HEADQUARTERS**
125 Old Broad Street
London, EC2N 1AR
United Kingdom

To report a website vulnerability, please go to [Responsible Disclosure](#).

Eaton Vance is part of Morgan Stanley Investment Management, the asset management division of Morgan Stanley.

This site (www.eatonvance.ch) is operated by Eaton Vance Management (International) Limited ("We"). We are a limited company, registered in England and Wales under company number 4228294 and have our registered office at 125 Old Broad Street, London, EC2N 1AR. Our VAT number is 762717416.

Eaton Vance Management (International) Limited is authorised and regulated by the Financial Conduct Authority ("FCA") and is entered on the FCA's register with register number 208634.

The value of your investment can go up or down so you may get back less than your initial investment. Past performance is not a guide to future returns.

The information on this webpage is not intended for U.S. residents. To visit our U.S. website [please click here](#).

Eaton Vance Management (Registration No. 1121368) and Parametric Portfolio Associates (Registration No. 1217626) are the registered trade marks of Eaton Vance.

Publication details: Tuesday, November 30, 2021 12:25 AM

Page ID: EPATD - <https://www.eatonvance.ch/eaton-vance-parametric-emerging-markets-fund-epatd.php>