



# Small-Cap Fund (R)

A diversified portfolio of small-cap stocks that seeks long-term capital appreciation.

R

Share Class

**ERSGX**

Symbol

**\$16.81** \$-0.03

NAV as of Nov 24, 2021

**Fact Sheet**  
Sep 30, 2021

**Commentary/Attribution**  
Sep 30, 2021

## The Fund

The Fund's bottom-up stock-picking approach aims to identify companies that the manager expects to achieve growth that exceeds the average of all publicly traded companies in the United States over the long term.

## The Approach

We believe small-cap markets are becoming increasingly inefficient, so we seek to exploit this inefficiency with intensive fundamental research by searching for companies with experienced and proven management teams whose interests are aligned with investors.

## The Features

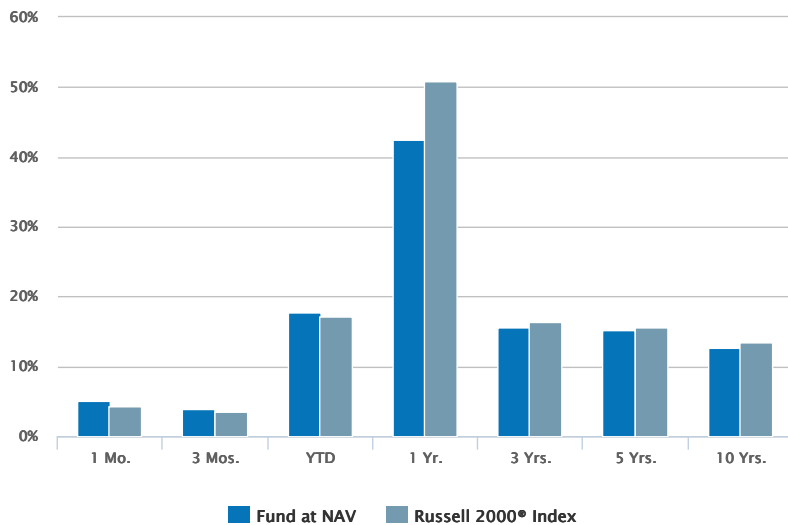
Led by two portfolio managers with more than 35 years of collective investing experience and supported by a focused team of small-cap analysts. The team holds approximately 1,000 company meetings per year to construct a high conviction diversified portfolio of quality small cap companies.

## Overview

### Historical Returns (%)

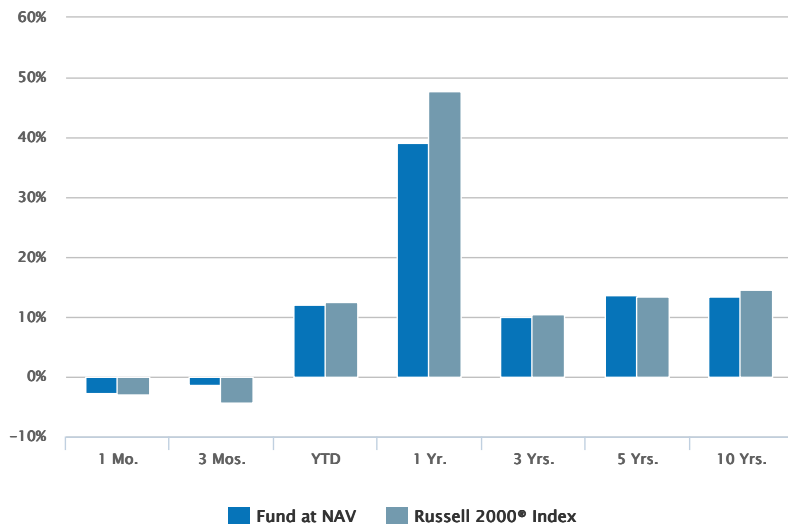
as of Sep 30, 2021

10/31/2021



09/30/2021

*Past performance is no guarantee of future results. Investment return and principal value will fluctuate so that shares, when redeemed, may be worth more or less than their original cost. Performance is for the stated time period only; due to market volatility, the Fund's current performance may be lower or higher than quoted. Returns are historical and are calculated by determining the percentage change in net asset value (NAV) with all distributions reinvested. Returns for other classes of shares offered by the Fund are different. Performance less than or equal to one year is cumulative. The share class has no sales charge.*



10/31/2021								
Fund at NAV	5.06	3.80	17.73	42.40	15.62	15.15	12.65	
Russell 2000®Index <sup>1</sup>	4.25	3.44	17.19	50.80	16.45	15.51	13.49	
09/30/2021								
Fund at NAV	-2.68	-1.33	12.06	39.04	10.02	13.70	13.44	
Russell 2000®Index <sup>1</sup>	-2.95	-4.36	12.41	47.68	10.53	13.44	14.62	

Past performance is no guarantee of future results. Investment return and principal value will fluctuate so that shares, when redeemed, may be worth more or less than their original cost. Performance is for the stated time period only; due to market volatility, the Fund's current performance may be lower or higher than quoted. Returns are historical and are calculated by determining the percentage change in net asset value (NAV) with all distributions reinvested. Returns for other classes of shares offered by the Fund are different. Performance less than or equal to one year is cumulative. The share class has no sales charge.

## Fund Facts

as of Oct 31, 2021

Class R Inception	07/31/2009
Performance Inception	01/02/1997
Investment Objective	Long-term capital appreciation
Total Net Assets	\$140.7M
Minimum Investment	\$1000
Expense Ratio (Gross) <sup>2,3</sup>	1.71%
Expense Ratio (Net) <sup>2,3</sup>	1.46%
CUSIP	277905410

## Top 10 Holdings (%)<sup>4,5</sup>

as of Sep 30, 2021

National Vision Holdings Inc	2.62
Performance Food Group Co	2.51
Valvoline Inc	2.44
AZEK Co Inc	2.24
SouthState Corp	2.09
LHC Group Inc	2.01
Terminix Global Holdings Inc	1.96
Chemed Corp	1.96
Commerce Bancshares Inc/MO	1.93
CBIZ Inc	1.88
<b>Total</b>	<b>21.63</b>

## Portfolio Management

[J. Griffith Noble, CFA](#)

[Managed Fund since 2015](#)

[Michael D. McLean, CFA](#)

[Managed Fund since 2015](#)

Portfolio profile subject to change due to active management. Percentages may not total 100% due to rounding.

## About Risk:

The value of investments held by the Fund may increase or decrease in response to economic, and financial events (whether real, expected or perceived) in the U.S. and global markets. The value of equity securities is sensitive to stock market volatility. Smaller companies are generally subject to greater price fluctuations, limited liquidity, higher transaction costs and higher investment risk than larger, more established companies. Investments in foreign instruments or currencies can involve greater risk and volatility than U.S. investments because of adverse market, economic, political, regulatory, geopolitical, currency exchange rates or other conditions. The Fund is exposed to liquidity risk when trading volume, lack of a market maker or trading partner, large position size, market conditions, or legal restrictions impair its ability to sell particular investments or to sell them at advantageous market prices. The impact of the coronavirus on global markets could last for an extended period and could adversely affect the Fund's performance. No fund is a complete investment program and you may lose money investing in a fund. The Fund may engage in other investment practices that may involve additional risks and you should review the [Fund prospectus](#) for a complete description.

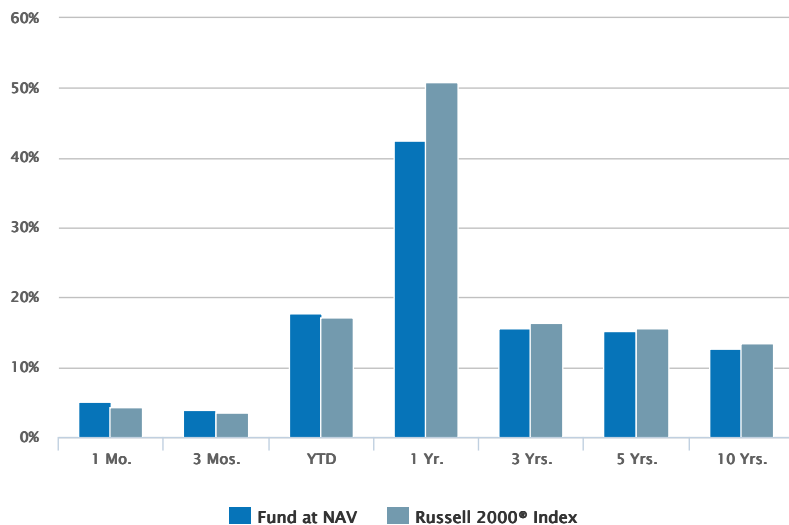
1. Russell 2000® Index is an unmanaged index of 2,000 U.S. small-cap stocks. Unless otherwise stated, index returns do not reflect the effect of any applicable sales charges, commissions, expenses, taxes or leverage, as applicable. It is not possible to invest directly in an index. Historical performance of the index illustrates market trends and does not represent the past or future performance of the fund.
2. Source: Fund prospectus.
3. Net expense ratio reflects a contractual expense reimbursement that continues through 04/30/22. Without the reimbursement, if applicable, performance would have been lower.
4. Top 10 Holdings excludes cash and equivalents.
5. Percent of total net assets.

## Performance

### Historical Returns (%)

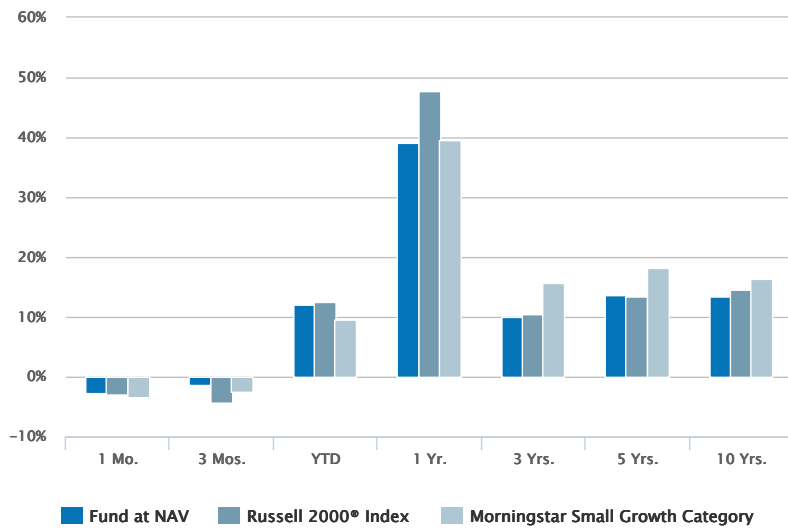
as of Sep 30, 2021

10/31/2021



09/30/2021

*Past performance is no guarantee of future results. Investment return and principal value will fluctuate so that shares, when redeemed, may be worth more or less than their original cost. Performance is for the stated time period only; due to market volatility, the Fund's current performance may be lower or higher than quoted. Returns are historical and are calculated by determining the percentage change in net asset value (NAV) with all distributions reinvested. Returns for other classes of shares offered by the Fund are different. Performance less than or equal to one year is cumulative. The share class has no sales charge.*



10/31/2021							
Fund at NAV	5.06	3.80	17.73	42.40	15.62	15.15	12.65
Russell 2000® Index <sup>1</sup>	4.25	3.44	17.19	50.80	16.45	15.51	13.49
09/30/2021							
Fund at NAV	-2.68	-1.33	12.06	39.04	10.02	13.70	13.44
Russell 2000® Index <sup>1</sup>	-2.95	-4.36	12.41	47.68	10.53	13.44	14.62
Morningstar Small Growth Category <sup>6</sup>	-3.40	-2.57	9.63	39.55	15.66	18.25	16.46

Past performance is no guarantee of future results. Investment return and principal value will fluctuate so that shares, when redeemed, may be worth more or less than their original cost. Performance is for the stated time period only; due to market volatility, the Fund's current performance may be lower or higher than quoted. Returns are historical and are calculated by determining the percentage change in net asset value (NAV) with all distributions reinvested. Returns for other classes of shares offered by the Fund are different. Performance less than or equal to one year is cumulative. The share class has no sales charge.

## Calendar Year Returns (%)

	2011	2012	2013	2014	2015	2016	2017	2018	2019	2020
Fund at NAV	-6.07	11.58	34.93	3.54	-3.05	19.04	14.64	-6.04	27.18	12.51
Russell 2000® Index <sup>1</sup>	-4.18	16.35	38.82	4.89	-4.41	21.31	14.65	-11.01	25.52	19.96

## Fund Facts

Expense Ratio (Gross) <sup>2,3</sup>	1.71%
Expense Ratio (Net) <sup>2,3</sup>	1.46%
Class R Inception	07/31/2009
Performance Inception	01/02/1997
Distribution Frequency	Annually

## Risk Measures (3 Year)<sup>7</sup>

as of Oct 31, 2021

Alpha (%)	2.53
Beta	0.76
R-Squared (%)	91.91
Standard Deviation (%)	19.69
Sharpe Ratio	0.74

# Morningstar Rating™

as of Oct 31, 2021

Time Period	Rating	Funds in Small Growth Category
Overall	★★	574
3 Years	★★	574
5 Years	★★	504
10 Years	★★	380

The Morningstar Rating™ for funds, or "star rating", is calculated for managed products (including mutual funds and exchange-traded funds) with at least a three-year history. Exchange-traded funds and open-ended mutual funds are considered a single population for comparative purposes. It is calculated based on a Morningstar Risk-Adjusted Return measure that accounts for variation in a managed product's monthly excess performance, placing more emphasis on downward variations and rewarding consistent performance. The top 10% of products in each product category receive 5 stars, the next 22.5% receive 4 stars, the next 35% receive 3 stars, the next 22.5% receive 2 stars, and the bottom 10% receive 1 star.

The Overall Morningstar Rating for a managed product is derived from a weighted average of the performance figures associated with its three-, five-, and 10-year (if applicable) Morningstar Rating metrics. The weights are: 100% three-year rating for 36-59 months of total returns, 60% five-year rating/40% three-year rating for 60-119 months of total returns, and 50% 10-year rating/30% five-year rating/20% three-year rating for 120 or more months of total returns. While the 10-year overall star rating formula seems to give the most weight to the 10-year period, the most recent three-year period actually has the greatest impact because it is included in all three rating periods. Star ratings do not reflect the effect of any applicable sales load. Hollow stars denote Morningstar Extended Performance Ratings and are considered estimates based on the performance of the fund's oldest share class, adjusted for fees and expenses.

©2021 Morningstar. All Rights Reserved. The information contained herein: (1) is proprietary to Morningstar and/or its content providers; (2) may not be copied or distributed; and (3) is not warranted to be accurate, complete or timely. Neither Morningstar nor its content providers are responsible for any damages or losses arising from any use of this information.

## NAV History

Date	NAV	NAV Change
Nov 24, 2021	\$16.81	-\$0.03
Nov 23, 2021	\$16.84	-\$0.02
Nov 22, 2021	\$16.86	\$0.07
Nov 19, 2021	\$16.79	-\$0.10
Nov 18, 2021	\$16.89	-\$0.08
Nov 17, 2021	\$16.97	-\$0.12
Nov 16, 2021	\$17.09	\$0.00
Nov 15, 2021	\$17.09	\$0.00
Nov 12, 2021	\$17.09	\$0.05
Nov 11, 2021	\$17.04	\$0.00

## Distribution History<sup>8</sup>

Ex-Date	Distribution	Reinvest NAV
---------	--------------	--------------

No records in this table indicates that there has not been a distribution greater than .0001 within the past 3 years.

[Fund prospectus](#)

## Capital Gain History<sup>8</sup>

Ex-Date	Short-Term	Long-Term	Reinvest NAV
Dec 08, 2020		\$0.02730	\$13.47
Aug 18, 2020	\$0.01880	\$0.10930	\$11.89
Dec 05, 2019	\$0.06750	\$0.59180	\$12.37
Aug 08, 2019	\$0.00410	\$0.28440	\$12.79
Dec 07, 2018	\$0.20140	\$1.16300	\$11.28

No records in this table indicates that there has not been a capital gain greater than .0001 within the past 3 years.

[Fund prospectus](#)

Portfolio profile subject to change due to active management. Percentages may not total 100% due to rounding.

## About Risk:

The value of investments held by the Fund may increase or decrease in response to economic, and financial events (whether real, expected or perceived) in the U.S. and global markets. The value of equity securities is sensitive to stock market volatility. Smaller companies are generally subject to greater price fluctuations, limited liquidity, higher transaction costs and higher investment risk than larger, more established companies. Investments in foreign instruments or currencies can involve greater risk and volatility than U.S. investments because of adverse market, economic, political, regulatory, geopolitical, currency exchange rates or other conditions. The Fund is exposed to liquidity risk when trading volume, lack of a market maker or trading partner, large position size, market conditions, or legal restrictions impair its ability to sell particular investments or to sell them at advantageous market prices. The impact of the coronavirus on global markets could last for an extended period and could adversely affect the Fund's performance. No fund is a complete investment program and you may lose money investing in a fund. The Fund may engage in other investment practices that may involve additional risks and you should review the [Fund prospectus](#) for a complete description.

1. Russell 2000® Index is an unmanaged index of 2,000 U.S. small-cap stocks. Unless otherwise stated, index returns do not reflect the effect of any applicable sales charges, commissions, expenses, taxes or leverage, as applicable. It is not possible to invest directly in an index. Historical performance of the index illustrates market trends and does not represent the past or future performance of the fund.
2. Source: Fund prospectus.
3. Net expense ratio reflects a contractual expense reimbursement that continues through 04/30/22. Without the reimbursement, if applicable, performance would have been lower.
6. The Morningstar Small Growth Category includes funds that invest primarily in U.S. small-cap companies with growth characteristics such as high earnings growth and high price ratios.
7. Alpha measures risk-adjusted performance, showing excess return delivered at the same risk level as the benchmark. Beta measures the volatility of a fund relative to the overall market. R-Squared represents the percentage of the portfolio's movement that can be explained by the general movement of the market. Standard deviation measures the historic volatility of a fund. Sharpe Ratio uses standard deviation and excess return to determine reward per unit of risk.
8. A portion of the Fund's returns may be comprised of return of capital or short term capital gains. The Fund will determine the tax characteristics of all Fund distributions after the end of the calendar year and will provide shareholders such information at that time. Please consult your tax advisor for further information.

## Portfolio

### Asset Mix (%)<sup>5,9</sup>

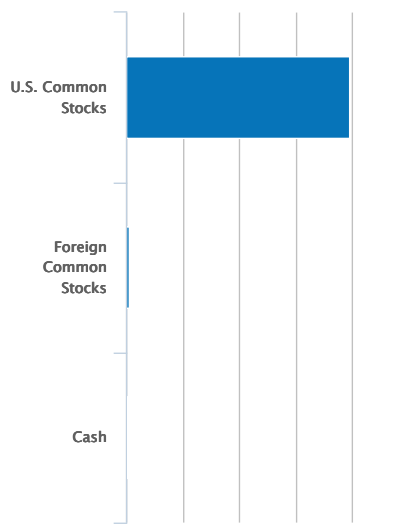
as of Sep 30, 2021

09/30/2021

### Portfolio Statistics

as of Sep 30, 2021

Average Market Cap	\$5.1B
Price/Earnings Ratio	23.27
Number of Holdings	83



Price/Book Ratio 3.19

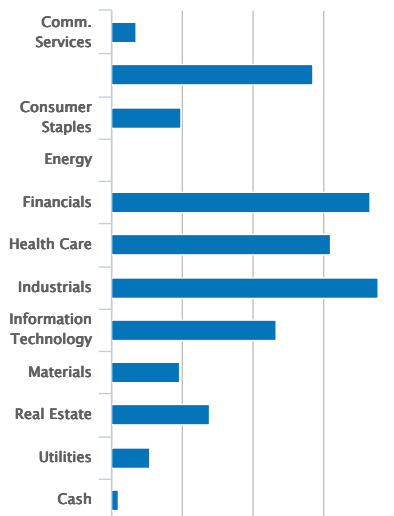
Active Share<sup>10</sup> 94.51%

U.S. Common Stocks	98.26
Foreign Common Stocks	1.30
Cash	0.44
<b>Total</b>	<b>100.00</b>

## GICS Sector Breakdown (%)<sup>5</sup>

as of Sep 30, 2021

09/30/2021



Comm. Services	1.74	3.46
Consumer Discretionary	14.22	11.47
Consumer Staples	4.88	3.22
Energy	—	4.54
Financials	18.28	15.45
Health Care	15.52	20.24
Industrials	18.82	14.44
Information Technology	11.67	14.14

Materials	4.78	3.75
Real Estate	6.94	6.89
Utilities	2.71	2.40
Cash	0.44	—

## Fund Holdings (%)<sup>5,11</sup>

as of Sep 30, 2021

Holding	% of Net Assets
National Vision Holdings Inc	2.62%
Performance Food Group Co	2.50%
Valvoline Inc	2.44%
AZEK Co Inc	2.24%
SouthState Corp	2.09%
LHC Group Inc	2.01%
Terminix Global Holdings Inc	1.96%
Chemed Corp	1.96%
Commerce Bancshares Inc/MO	1.93%
CBIZ Inc	1.88%

[View All](#)

Portfolio profile subject to change due to active management. Percentages may not total 100% due to rounding.

## About Risk:

The value of investments held by the Fund may increase or decrease in response to economic, and financial events (whether real, expected or perceived) in the U.S. and global markets. The value of equity securities is sensitive to stock market volatility. Smaller companies are generally subject to greater price fluctuations, limited liquidity, higher transaction costs and higher investment risk than larger, more established companies. Investments in foreign instruments or currencies can involve greater risk and volatility than U.S. investments because of adverse market, economic, political, regulatory, geopolitical, currency exchange rates or other conditions. The Fund is exposed to liquidity risk when trading volume, lack of a market maker or trading partner, large position size, market conditions, or legal restrictions impair its ability to sell particular investments or to sell them at advantageous market prices. The impact of the coronavirus on global markets could last for an extended period and could adversely affect the Fund's performance. No fund is a complete investment program and you may lose money investing in a fund. The Fund may engage in other investment practices that may involve additional risks and you should review the [Fund prospectus](#) for a complete description.

1. Russell 2000® Index is an unmanaged index of 2,000 U.S. small-cap stocks. Unless otherwise stated, index returns do not reflect the effect of any applicable sales charges, commissions, expenses, taxes or leverage, as applicable. It is not possible to invest directly in an index. Historical performance of the index illustrates market trends and does not represent the past or future performance of the fund.

5. Percent of total net assets.

9. A delay in transaction settlement may result in a negative cash position.

10. Active Share is a measure of the differentiation of the holdings of a portfolio from the holdings of its appropriate benchmark index. It is calculated as one half of the sum of the absolute value of the differences found between the portfolio weights and the benchmark weights.

11. The following list reflects unaudited securities holdings (excluding derivatives positions). Holdings information may differ if presented as of trade date. Due to rounding, holdings of less than 0.005% may show as 0.00%. Portfolio information subject to change due to active management.





**J. Griffith Noble, CFA**  
Vice President, Eaton Vance  
Management  
Joined Eaton Vance 2012

### Biography

J. Griffith Noble is a vice president of Eaton Vance Management, co-director of U.S. small-cap equity and a portfolio manager on Eaton Vance's small-/midcap team. He is responsible for buy and sell decisions, portfolio construction and risk management for the firm's small- and midcap equity portfolios, as well as coverage of the energy and industrials sectors. He joined Eaton Vance in 2012.

Griff began his career in the investment management industry in 1996. Before joining Eaton Vance, he was an equity analyst with BlackRock, Inc. He was previously affiliated with Byram Capital Management, Emerson Investment Management, Deutsche Asset Management and Putnam Investments.

Griff earned a B.S. from the University of Vermont and an MBA from Babson College. He is a member of the CFA Society of Boston and is a CFA charterholder.

---

### Education

- B.S. University of Vermont
- M.B.A. Babson College

### Experience

- Managed Fund since 2015

---

### Other funds managed

- [Global Small-Cap Equity Fund](#)
- [Special Equities Fund](#)
- [Tax-Managed Small-Cap Fund](#)



**Michael D. McLean, CFA**  
Vice President, Eaton Vance  
Management  
Joined Eaton Vance 2001

### Biography

Michael McLean is a vice president of Eaton Vance Management, co-director of U.S. small-cap equity and a portfolio manager and equity analyst on Eaton Vance's small-/midcap team. He is responsible for buy and sell decisions, portfolio construction and risk management for the firm's small- and midcap equity portfolios, as well as coverage of the consumer discretionary and consumer staples sectors. He began his career in the investment management industry with Eaton Vance in 2001.

Mike earned a B.S. from Providence College. He is a CFA charterholder.

---

### Education

- B.S. Providence College

### Experience

- Managed Fund since 2015

---

### Other funds managed

- [Global Small-Cap Equity Fund](#)
- [Special Equities Fund](#)
- [Tax-Managed Small-Cap Fund](#)



## Fact Sheet

[Download](#) - Last updated: Sep 30, 2021



## Commentary/Attribution

[Download](#) - Last updated: Sep 30, 2021



## Annual Report

[Download](#) - Last updated: Dec 31, 2020



## Full Prospectus

[Download](#) - Last updated: May 1, 2021



## Q1 Holdings

[Download](#) - Last updated: Mar 31, 2021



## Q3 Holdings

[Download](#) - Last updated: Sep 30, 2020



## Holdings - Form N-PORT

[Download](#)



## SAI

[Download](#) - Last updated: May 1, 2021



## Semi-Annual Report

[Download](#) - Last updated: Jun 30, 2021



## Summary Prospectus

[Download](#) - Last updated: May 1, 2021



### HEADQUARTERS

Two International Place  
Boston, MA 02110

### Investments

[Eaton Vance Funds](#)

[Parametric Funds](#)

[Calvert Funds](#)

[Separately Managed](#)

[Accounts](#)

[Closed-End Funds and Term  
Trusts](#)

### Insights

[Advisory Blog](#)

[Monthly Market Monitor](#)

[Market Update](#)

[EventsContent for  
Investment Professionals  
only](#)

[The Advisor Institute](#)

### Taxes & Tools

[Investment Tax Center](#)

[Tax Information](#)

[Investment Tax Calculator](#)

[Laddered Investing Interest  
Rate Scenario Tool](#)

[Concentrated Stock Position  
Calculator](#)

[Tax-Equivalent Yield  
Calculator](#)

### Resources

[Mutual Fund Sales Charges](#)

[Parametric Sales Charges](#)

[Forms & E-Delivery](#)

[Fund Corporate Governance](#)

[Mutual Funds & Abandoned  
Property](#)

[DST Vision](#)

[AdvisorCentral](#)

To report a website vulnerability, please go to [Responsible Disclosure](#).

Eaton Vance is part of Morgan Stanley Investment Management, the asset management division of Morgan Stanley.

 This image indicates content designed specifically for Financial Advisors / Investment Professionals. This material is not to be used with the public.

Before investing in any Eaton Vance fund, prospective investors should consider carefully the investment objective(s), risks, and charges and expenses. For open-end mutual funds, the current prospectus contains this and other information. To obtain a mutual fund prospectus or summary prospectus and the most recent annual and semiannual shareholder reports, contact your financial advisor or [download a copy here](#). Read the prospectus carefully before you invest or send money. For closed-end funds, you should contact your financial advisor. To obtain the most recent annual and semi-annual shareholder report for a closed-end fund contact your financial advisor or [download a copy here](#). Before purchasing any variable product, consider the objectives, risks, charges, and expenses associated with the underlying investment option(s) and those of the product itself. For a prospectus containing this and other information, contact your investment or insurance professional. Read the prospectus carefully before investing.

NOT FDIC INSURED | OFFER NO BANK GUARANTEE | MAY LOSE VALUE | NOT INSURED BY ANY FEDERAL GOVERNMENT AGENCY | NOT A DEPOSIT

Eaton Vance does not provide tax or legal advice. Prospective investors should consult with a tax or legal advisor before making any investment decision.

The information on this Web page is for U.S. residents only and does not constitute an offer to sell, or a solicitation of an offer to purchase, securities in any jurisdiction to any person to whom it is not lawful to make such an offer.

© Eaton Vance Management. All rights reserved. Eaton Vance open-end mutual funds are offered through Eaton Vance Distributors, Inc. Two International Place, Boston, MA 02110. Member [FINRA](#) / [SIPC](#)

Publication details: Saturday, November 27, 2021 12:04 AM

Page ID: ERSGX - <https://funds.eatonvance.com/small-cap-fund-ersgx.php>