



PRODUCT FINDER

WEALTH STRATEGIES

INVESTMENTS

INSIGHTS

TAXES AND TOOLS

Calvert Core Bond Fund (I)

The fund seeks total return with an emphasis on income.

**CLDIX****\$15.74** \$0.03

Symbol

NAV as of Mar 27, 2024

Share Class

**Fact Sheet**

Dec 31, 2023

**Commentary**

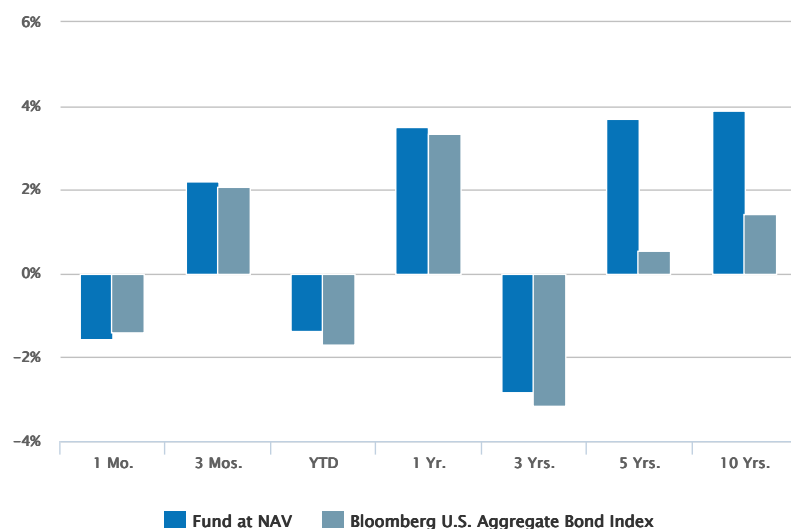
Dec 31, 2023

Overview

Historical Returns (%)

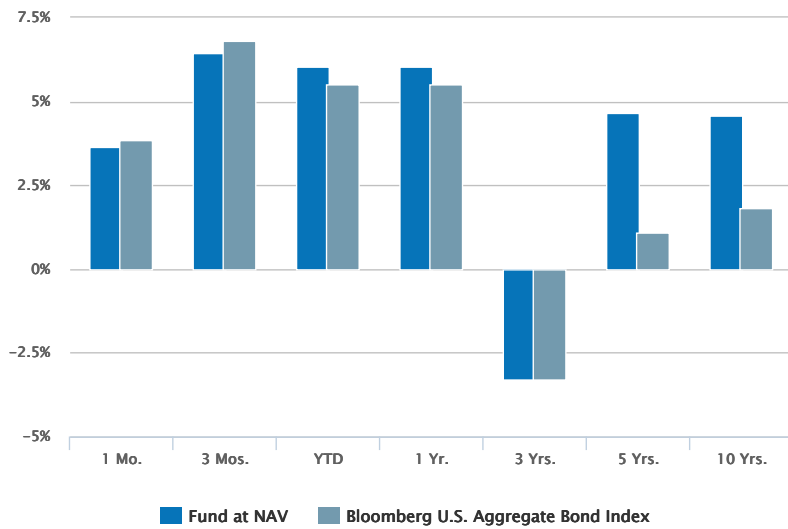
as of Dec 31, 2023

02/29/2024



12/31/2023

Past performance is no guarantee of future results. Investment return and principal value will fluctuate so that shares, when redeemed, may be worth more or less than their original cost. Performance is for the stated time period only; due to market volatility, the Fund's current performance may be lower or higher than quoted. Returns are historical and are calculated by determining the percentage change in net asset value (NAV) with all distributions reinvested. Returns for other classes of shares offered by the Fund are different. Performance less than or equal to one year is cumulative. Performance prior to December 31, 2016 reflects the performance of the Fund's former adviser, Calvert Investment Management, Inc. Prior to 2/1/2021, Fund was called Calvert Long-Term Income Fund, had a different objective and employed a different investment strategy. Please see prospectus for more details. Total return prior to the commencement of the class reflects returns of another Fund class. Prior returns are adjusted to reflect applicable sales charge (but were not adjusted for other expenses). If adjusted for other expenses, returns would be lower. The share class has no sales charge.



02/29/2024							
Fund at NAV	-1.56	2.21	-1.37	3.51	-2.84	3.71	3.90
Bloomberg U.S. Aggregate Bond Index ¹	-1.41	2.08	-1.68	3.33	-3.16	0.56	1.43
12/31/2023							
Fund at NAV	3.63	6.43	6.05	6.05	-3.30	4.67	4.56
Bloomberg U.S. Aggregate Bond Index ¹	3.83	6.82	5.53	5.53	-3.31	1.10	1.81

Past performance is no guarantee of future results. Investment return and principal value will fluctuate so that shares, when redeemed, may be worth more or less than their original cost. Performance is for the stated time period only; due to market volatility, the Fund's current performance may be lower or higher than quoted. Returns are historical and are calculated by determining the percentage change in net asset value (NAV) with all distributions reinvested. Returns for other classes of shares offered by the Fund are different. Performance less than or equal to one year is cumulative. Performance prior to December 31, 2016 reflects the performance of the Fund's former adviser, Calvert Investment Management, Inc. Prior to 2/1/2021, Fund was called Calvert Long-Term Income Fund, had a different objective and employed a different investment strategy. Please see prospectus for more details. Total return prior to the commencement of the class reflects returns of another Fund class. Prior returns are adjusted to reflect applicable sales charge (but were not adjusted for other expenses). If adjusted for other expenses, returns would be lower. The share class has no sales charge.

Fund Facts

as of Feb 29, 2024

Class I Inception	01/30/2015
Performance Inception	12/31/2004
Investment Objective	Maximize income, to the extent consistent with preservation of capital
Total Net Assets	\$866.1M
Minimum Investment	\$1000000
Expense Ratio (Gross) ²	0.59%
Expense Ratio (Net) ^{2,3}	0.49%
CUSIP	131582330

Top 10 Holdings (%)^{4,5}

as of Feb 29, 2024

FNMA TBA 30 YR 5 SINGLE FAMILY MORTGAGE	8.34
United States Treasury Note/Bond	6.08
United States Treasury Note/Bond	4.84
United States Treasury Note/Bond	4.08
Fannie Mae or Freddie Mac	3.52
United States Treasury Note/Bond	3.27
FNMA TBA 30 YR 4.5 SINGLE FAMILY MORTGAGE	2.91
United States Treasury Bill	2.41
Fannie Mae Pool - MA5215	2.32
United States Treasury Note/Bond	1.57
Total	39.34

Morningstar Rating™

as of Feb 29, 2024

Time Period	Rating	Funds in Intermediate Core Bond Category
Overall	★★★★★	426
3 Years	★★★★★	426
5 Years	★★★★★	386
10 Years	☆☆☆☆☆	275

The Morningstar Rating™ for funds, or "star rating", is calculated for managed products (including mutual funds and exchange-traded funds) with at least a three-year history. Exchange-traded funds and open-ended mutual funds are considered a single population for comparative purposes. It is calculated based on a Morningstar Risk-Adjusted Return measure that accounts for variation in a managed product's monthly excess performance, placing more emphasis on downward variations and rewarding consistent performance. The top 10% of products in each product category receive 5 stars, the next 22.5% receive 4 stars, the next 35% receive 3 stars, the next 22.5% receive 2 stars, and the bottom 10% receive 1 star.

The Overall Morningstar Rating for a managed product is derived from a weighted average of the performance figures associated with its three-, five-, and 10-year (if applicable) Morningstar Rating metrics. The weights are: 100% three-year rating for 36-59 months of total returns, 60% five-year rating/40% three-year rating for 60-119 months of total returns, and 50% 10-year rating/30% five-year rating/20% three-year rating for 120 or more months of total returns. While the 10-year overall star rating formula seems to give the most weight to the 10-year period, the most recent three-year period actually has the greatest impact because it is included in all three rating periods. Star ratings do not reflect the effect of any applicable sales load. Hollow stars denote Morningstar Extended Performance Ratings and are considered estimates based on the performance of the fund's oldest share class, adjusted for fees and expenses.

©2024 Morningstar. All Rights Reserved. The information contained herein: (1) is proprietary to Morningstar and/or its content providers; (2) may not be copied or distributed; and (3) is not warranted to be accurate, complete or timely. Neither Morningstar nor its content providers are responsible for any damages or losses arising from any use of this information.

Portfolio Management

[Vishal Khanduja, CFA](#)

[Managed Fund since 2013](#)

[Brian S. Ellis, CFA](#)

[Managed Fund since 2015](#)

Portfolio profile subject to change due to active management. Percentages may not total 100% due to rounding. Portfolio characteristics exclude 1 security in Calvert's High Impact Investments program, which represented 0.176% of the Fund's portfolio as of 12/31/2023. High Social Impact Investments are investments that, in Calvert's opinion, offer the opportunity for significant sustainability and social impact. These investments are generally illiquid and involve high risks. See the Fund's prospectus for details and calvert.com for a complete list of Fund holdings.

RISK CONSIDERATIONS

The value of investments held by the Fund may increase or decrease in response to economic, and financial events (whether real, expected or perceived) in the U.S. and global markets. As interest rates rise, the value of certain income investments is likely to decline. Investments in debt instruments may be affected by changes in the creditworthiness of the issuer and are subject to the risk of non-payment of principal and interest. The value of income securities also may decline because of real or perceived concerns about the issuer's ability to make principal and interest payments. Mortgage- and asset-backed securities are subject to credit, interest rate, prepayment and extension risk. U.S. Treasury securities generally have a lower return than other obligations because of their higher credit quality and market liquidity. While certain U.S. Government-sponsored agencies may be chartered or sponsored by acts of Congress, their securities are neither issued nor guaranteed by the U.S. Treasury. Investments rated below investment grade (sometimes referred to as "junk") are typically subject to greater price volatility and illiquidity than higher rated investments. Investing primarily in responsible investments carries the risk that, under certain market conditions, the Fund may underperform funds that do not utilize a responsible investment strategy. The Fund is exposed to liquidity risk when trading volume, lack of a market maker or trading partner, large position size, market conditions, or legal restrictions impair its ability to sell particular investments or to sell them at advantageous market prices. The impact of the coronavirus on global markets could last for an extended period and could adversely affect the Fund's performance. No fund is a complete investment program and you may lose money investing in a fund. The Fund may engage in other investment practices that may involve additional risks and you should review the [Fund prospectus](#) for a complete description.

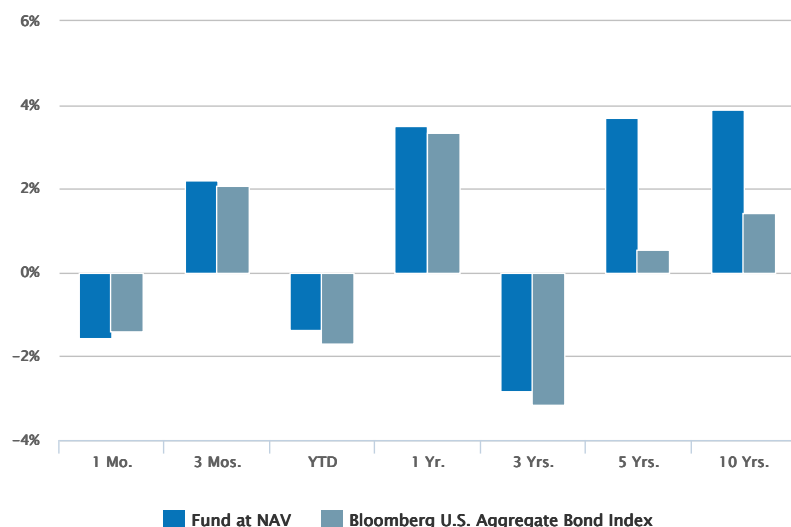
1. Bloomberg U.S. Aggregate Bond Index is an unmanaged index of domestic investment-grade bonds, including corporate, government and mortgage-backed securities. Unless otherwise stated, index returns do not reflect the effect of any applicable sales charges, commissions, expenses, taxes or leverage, as applicable. It is not possible to invest directly in an index. Historical performance of the index illustrates market trends and does not represent the past or future performance of the fund.
2. Source: Fund prospectus.
3. Net Expense Ratio reflects a contractual expense reimbursement that continues through 2/1/25. Without the reimbursement, if applicable, performance would have been lower.
4. Top 10 Holdings excludes cash and equivalents.
5. Percent of total net assets.

Performance

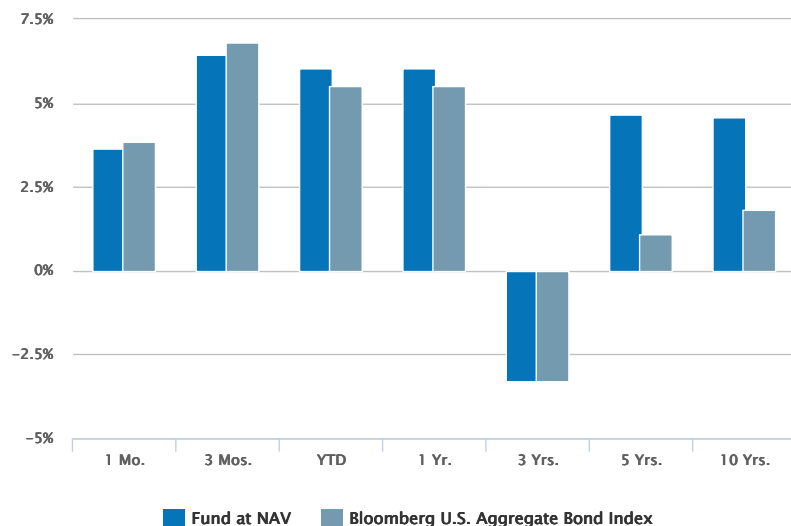
Historical Returns (%)

as of Dec 31, 2023

02/29/2024



12/31/2023



Past performance is no guarantee of future results. Investment return and principal value will fluctuate so that shares, when redeemed, may be worth more or less than their original cost. Performance is for the stated time period only; due to market volatility, the Fund's current performance may be lower or higher than quoted. Returns are historical and are calculated by determining the percentage change in net asset value (NAV) with all distributions reinvested. Returns for other classes of shares offered by the Fund are different. Performance less than or equal to one year is cumulative. Performance prior to December 31, 2016 reflects the performance of the Fund's former adviser, Calvert Investment Management, Inc. Prior to 2/1/2021, Fund was called Calvert Long-Term Income Fund, had a different objective and employed a different investment strategy. Please see prospectus for more details. Total return prior to the commencement of the class reflects returns of another Fund class. Prior returns are adjusted to reflect applicable sales charge (but were not adjusted for other expenses). If adjusted for other expenses, returns would be lower. The share class has no sales charge.

02/29/2024							
Fund at NAV	-1.56	2.21	-1.37	3.51	-2.84	3.71	3.90
Bloomberg U.S. Aggregate Bond Index ¹	-1.41	2.08	-1.68	3.33	-3.16	0.56	1.43
12/31/2023							
Fund at NAV	3.63	6.43	6.05	6.05	-3.30	4.67	4.56
Bloomberg U.S. Aggregate Bond Index ¹	3.83	6.82	5.53	5.53	-3.31	1.10	1.81

Past performance is no guarantee of future results. Investment return and principal value will fluctuate so that shares, when redeemed, may be worth more or less than their original cost. Performance is for the stated time period only; due to market volatility, the Fund's current performance may be lower or higher than quoted. Returns are historical and are calculated by determining the percentage change in net asset value (NAV) with all distributions reinvested. Returns for other classes of shares offered by the Fund are different. Performance less than or equal to one year is cumulative. Performance prior to December 31, 2016 reflects the performance of the Fund's former adviser, Calvert Investment Management, Inc. Prior to 2/1/2021, Fund was called Calvert Long-Term Income Fund, had a different objective and employed a different investment strategy. Please see prospectus for more details. Total return prior to the commencement of the class reflects returns of another Fund class. Prior returns are adjusted to reflect applicable sales charge (but were not adjusted for other expenses). If adjusted for other expenses, returns would be lower. The share class has no sales charge.

Calendar Year Returns (%)

	2014	2015	2016	2017	2018	2019	2020	2021	2022	2023
Fund at NAV	15.15	-3.34	7.30	9.92	-5.32	20.96	14.88	-2.09	-12.91	6.05
Bloomberg U.S. Aggregate Bond Index ¹	5.97	0.55	2.65	3.54	0.01	8.72	7.51	-1.54	-13.01	5.53

Fund Facts

Class I Inception	01/30/2015
Performance Inception	12/31/2004
Expense Ratio (Gross) ²	0.59%
Expense Ratio (Net) ^{2,3}	0.49%
Distribution Frequency	Monthly

Yield Information⁶

as of Feb 29, 2024

Distribution Rate at NAV	4.96%
Subsidized SEC 30-day Yield	4.82%
Unsubsidized SEC 30-day Yield	4.79%

Morningstar Rating™

as of Feb 29, 2024

Time Period	Rating	Funds in Intermediate Core Bond Category
Overall	★★★★★	426
3 Years	★★★★★	426
5 Years	★★★★★	386
10 Years	☆☆☆☆☆	275

Time Period	Rating	Funds in Intermediate Core Bond Category
-------------	--------	--

The Morningstar Rating™ for funds, or "star rating", is calculated for managed products (including mutual funds and exchange-traded funds) with at least a three-year history. Exchange-traded funds and open-ended mutual funds are considered a single population for comparative purposes. It is calculated based on a Morningstar Risk-Adjusted Return measure that accounts for variation in a managed product's monthly excess performance, placing more emphasis on downward variations and rewarding consistent performance. The top 10% of products in each product category receive 5 stars, the next 22.5% receive 4 stars, the next 35% receive 3 stars, the next 22.5% receive 2 stars, and the bottom 10% receive 1 star.

The Overall Morningstar Rating for a managed product is derived from a weighted average of the performance figures associated with its three-, five-, and 10-year (if applicable) Morningstar Rating metrics. The weights are: 100% three-year rating for 36-59 months of total returns, 60% five-year rating/40% three-year rating for 60-119 months of total returns, and 50% 10-year rating/30% five-year rating/20% three-year rating for 120 or more months of total returns. While the 10-year overall star rating formula seems to give the most weight to the 10-year period, the most recent three-year period actually has the greatest impact because it is included in all three rating periods. Star ratings do not reflect the effect of any applicable sales load. Hollow stars denote Morningstar Extended Performance Ratings and are considered estimates based on the performance of the fund's oldest share class, adjusted for fees and expenses.

©2024 Morningstar. All Rights Reserved. The information contained herein: (1) is proprietary to Morningstar and/or its content providers; (2) may not be copied or distributed; and (3) is not warranted to be accurate, complete or timely. Neither Morningstar nor its content providers are responsible for any damages or losses arising from any use of this information.

NAV History

Date	NAV	NAV Change
Mar 27, 2024	\$15.74	\$0.03
Mar 26, 2024	\$15.71	\$0.01
Mar 25, 2024	\$15.70	-\$0.02
Mar 22, 2024	\$15.72	\$0.05
Mar 21, 2024	\$15.67	\$0.00
Mar 20, 2024	\$15.67	\$0.03
Mar 19, 2024	\$15.64	\$0.04
Mar 18, 2024	\$15.60	-\$0.01
Mar 15, 2024	\$15.61	-\$0.02
Mar 14, 2024	\$15.63	-\$0.10

Distribution History⁷

Ex-Date	Distribution	Reinvest NAV
Feb 29, 2024	\$0.06147	\$15.64
Jan 31, 2024	\$0.06046	\$15.95
Dec 29, 2023	\$0.06132	\$15.98
Nov 30, 2023	\$0.05974	\$15.48
Oct 31, 2023	\$0.05917	\$14.90
Sep 29, 2023	\$0.05789	\$15.19

[View All](#)

No records in this table indicates that there has not been a distribution greater than .0001 within the past 3 years.

[Fund prospectus](#)

Ex-Date	Distribution	Reinvest NAV
Aug 31, 2023	\$0.05823	\$15.60
Jul 31, 2023	\$0.05675	\$15.74
Jun 30, 2023	\$0.05244	\$15.79
May 31, 2023	\$0.05269	\$15.90

[View All](#)

No records in this table indicates that there has not been a distribution greater than .0001 within the past 3 years.

[Fund prospectus](#)

Capital Gain History⁷

Ex-Date	Short-Term	Long-Term	Reinvest NAV
Dec 02, 2021	\$0.07510	\$0.78950	\$18.54

No records in this table indicates that there has not been a capital gain greater than .0001 within the past 3 years.

[Fund prospectus](#)

Portfolio profile subject to change due to active management. Percentages may not total 100% due to rounding. Portfolio characteristics exclude 1 security in Calvert's High Impact Investments program, which represented 0.176% of the Fund's portfolio as of 12/31/2023. High Social Impact Investments are investments that, in Calvert's opinion, offer the opportunity for significant sustainability and social impact. These investments are generally illiquid and involve high risks. See the Fund's prospectus for details and calvert.com for a complete list of Fund holdings.

RISK CONSIDERATIONS

The value of investments held by the Fund may increase or decrease in response to economic, and financial events (whether real, expected or perceived) in the U.S. and global markets. As interest rates rise, the value of certain income investments is likely to decline. Investments in debt instruments may be affected by changes in the creditworthiness of the issuer and are subject to the risk of non-payment of principal and interest. The value of income securities also may decline because of real or perceived concerns about the issuer's ability to make principal and interest payments. Mortgage- and asset-backed securities are subject to credit, interest rate, prepayment and extension risk. U.S. Treasury securities generally have a lower return than other obligations because of their higher credit quality and market liquidity. While certain U.S. Government-sponsored agencies may be chartered or sponsored by acts of Congress, their securities are neither issued nor guaranteed by the U.S. Treasury. Investments rated below investment grade (sometimes referred to as "junk") are typically subject to greater price volatility and illiquidity than higher rated investments. Investing primarily in responsible investments carries the risk that, under certain market conditions, the Fund may underperform funds that do not utilize a responsible investment strategy. The Fund is exposed to liquidity risk when trading volume, lack of a market maker or trading partner, large position size, market conditions, or legal restrictions impair its ability to sell particular investments or to sell them at advantageous market prices. The impact of the coronavirus on global markets could last for an extended period and could adversely affect the Fund's performance. No fund is a complete investment program and you may lose money investing in a fund. The Fund may engage in other investment practices that may involve additional risks and you should review the [Fund prospectus](#) for a complete description.

1. Bloomberg U.S. Aggregate Bond Index is an unmanaged index of domestic investment-grade bonds, including corporate, government and mortgage-backed securities. Unless otherwise stated, index returns do not reflect the effect of any applicable sales charges, commissions, expenses, taxes or leverage, as applicable. It is not possible to invest directly in an index. Historical performance of the index illustrates market trends and does not represent the past or future performance of the fund.

2. Source: Fund prospectus.

3. Net Expense Ratio reflects a contractual expense reimbursement that continues through 2/1/25. Without the reimbursement, if applicable, performance would have been lower.

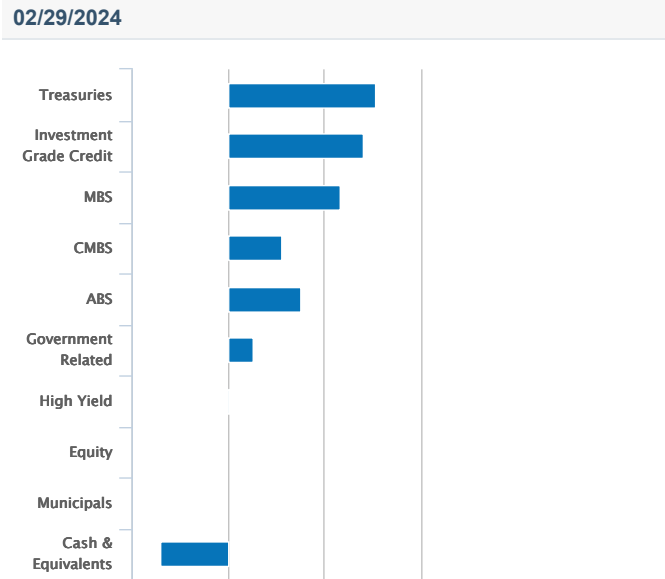
6. SEC 30-day yield is a standardized measure based on the estimated yield to maturity of a fund's investments over a 30-day period and is based on the maximum offer price at the date specified. The SEC 30-day yield is not based on the distributions made by the fund, which may differ. Subsidized yield reflects the effect of fee waivers and expense reimbursements. Distribution Rate at NAV is calculated by dividing the last distribution paid per share (annualized) by NAV. The Fund's monthly distribution may be comprised of ordinary income, net realized capital gains and returns of capital.

7. A portion of the Fund's returns may be comprised of return of capital or short term capital gains. The Fund will determine the tax characteristics of all Fund distributions after the end of the calendar year and will provide shareholders such information at that time. Please consult your tax advisor for further

Portfolio

Asset Mix (%)^{5,8}

as of Feb 29, 2024



Treasuries	30.70
Investment Grade Credit	28.25
MBS	23.18
CMBS	11.15
ABS	15.19
Government Related	5.25
High Yield	0.31
Equity	0.00
Municipals	0.00
Cash & Equivalents	-14.03

Credit Quality (%)^{5,8}

as of Feb 29, 2024

02/29/2024

Portfolio Statistics

as of Feb 29, 2024

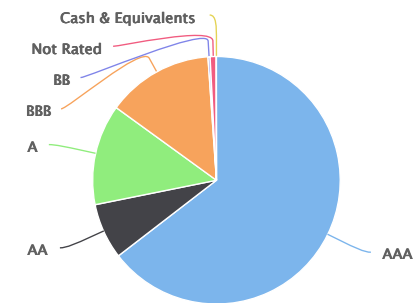
Number of Holdings	347
Average Coupon	4.85%
Average Maturity	5.85yrs.
Effective Duration	5.99yrs.
Yield to Worst	5.42%
Average Price	\$97.44
Modified Duration	6.6

Assets by Country (%)⁹

as of Feb 29, 2024

United States	87.51
Supranational	3.40
France	1.83
Canada	1.31
Germany	0.99
Spain	0.74
Sweden	0.66

[View All](#)



AAA	73.61
AA	8.30
A	15.00
BBB	15.88
BB	0.31
Not Rated	0.93
Cash & Equivalents	-14.03

Ratings are based on Moody's, S&P or Fitch, or Kroll for securitized debt instruments only (such as asset-backed securities and mortgage-backed securities), as applicable. If securities are rated differently by the ratings agencies, the highest rating is applied. Ratings, which are subject to change, apply to the creditworthiness of the issuers of the underlying securities and not to the Fund or its shares. Credit ratings measure the quality of an issuance based on the issuer's creditworthiness, with ratings ranging from AAA, being the highest, to D, being the lowest based on S&P's measures. Ratings of BBB or higher by S&P, Fitch or Kroll (Baa or higher by Moody's) are considered to be investment-grade quality. Credit ratings are based largely on the ratings agency's analysis at the time of rating. The rating assigned to any particular security is not necessarily a reflection of the issuer's current financial condition and does not necessarily reflect its assessment of the volatility of a security's market value or of the liquidity of an investment in the security. Holdings designated as "Not Rated" are not rated by the national ratings agencies stated above.

Italy	0.51
Japan	0.51
Netherlands	0.48
View All	

Fund Holdings^{5,10}

as of Jan 31, 2024

Holding	Coupon Rate	Maturity Date	% of Net Assets
Fannie Mae or Freddie Mac	5.00%	02/01/2052	10.24%
United States Treasury Note/Bond	4.88%	11/30/2025	7.89%
United States Treasury Note/Bond	5.00%	10/31/2025	5.85%
United States Treasury Note/Bond	4.50%	11/15/2033	5.43%
Fannie Mae or Freddie Mac	4.00%	02/01/2052	4.35%

[View All](#)

Holding	Coupon Rate	Maturity Date	% of Net Assets
United States Treasury Note/Bond	3.88%	05/15/2043	4.03%
Fannie Mae or Freddie Mac	4.50%	02/01/2052	3.58%
United States Treasury Bill	0.00%	05/16/2024	2.89%
United States Treasury Note/Bond	4.13%	07/31/2028	2.32%
United States Treasury Note/Bond	3.63%	05/31/2028	1.92%

[View All](#)

Portfolio profile subject to change due to active management. Percentages may not total 100% due to rounding. Portfolio characteristics exclude 1 security in Calvert's High Impact Investments program, which represented 0.176% of the Fund's portfolio as of 12/31/2023. High Social Impact Investments are investments that, in Calvert's opinion, offer the opportunity for significant sustainability and social impact. These investments are generally illiquid and involve high risks. See the Fund's prospectus for details and calvert.com for a complete list of Fund holdings.

RISK CONSIDERATIONS

The value of investments held by the Fund may increase or decrease in response to economic, and financial events (whether real, expected or perceived) in the U.S. and global markets. As interest rates rise, the value of certain income investments is likely to decline. Investments in debt instruments may be affected by changes in the creditworthiness of the issuer and are subject to the risk of non-payment of principal and interest. The value of income securities also may decline because of real or perceived concerns about the issuer's ability to make principal and interest payments. Mortgage- and asset-backed securities are subject to credit, interest rate, prepayment and extension risk. U.S. Treasury securities generally have a lower return than other obligations because of their higher credit quality and market liquidity. While certain U.S. Government-sponsored agencies may be chartered or sponsored by acts of Congress, their securities are neither issued nor guaranteed by the U.S. Treasury. Investments rated below investment grade (sometimes referred to as "junk") are typically subject to greater price volatility and illiquidity than higher rated investments. Investing primarily in responsible investments carries the risk that, under certain market conditions, the Fund may underperform funds that do not utilize a responsible investment strategy. The Fund is exposed to liquidity risk when trading volume, lack of a market maker or trading partner, large position size, market conditions, or legal restrictions impair its ability to sell particular investments or to sell them at advantageous market prices. The impact of the coronavirus on global markets could last for an extended period and could adversely affect the Fund's performance. No fund is a complete investment program and you may lose money investing in a fund. The Fund may engage in other investment practices that may involve additional risks and you should review the [Fund prospectus](#) for a complete description.

5. Percent of total net assets.

8. Cash & Equivalents is composed of cash, commercial paper, certificates of deposit, money market funds, and US Treasury and Agency obligations maturing in 13 months or less.

9. Percent of total market value.

10. The following list reflects unaudited securities holdings (excluding derivatives positions). Holdings information may differ if presented as of trade date. Due to rounding, holdings of less than 0.005% may show as 0.00%. Portfolio information subject to change due to active management.

Management



Vishal Khanduja, CFA
Co-Head, Broad Markets Fixed Income,
Portfolio Manager

Biography

Vishal is a managing director of Morgan Stanley Investment Management, Co-Head of the Broad Markets Fixed Income team and a portfolio manager. He is responsible for buy and sell decisions and portfolio construction. He joined Calvert Research and Management's predecessor organization Calvert Investment Management in 2012. Eaton Vance acquired Calvert Investment Management in 2016. Morgan Stanley acquired Eaton Vance in March 2021.

Vishal began his career in the investment management industry in 2005. Before joining Eaton Vance, he was a senior vice president, portfolio manager and head of taxable fixed income for Calvert Investments. Previously, he was a vice president and portfolio manager at Columbia Threadneedle and associate director of fixed-income analytics at Galliard Capital.

Vishal earned a bachelor of engineering from VJTI, Mumbai, India and an MBA from the Tippie School of Management at the University of Iowa. He is a member of the CFA Institute and CFA Society Boston. He is a CFA charterholder.

Education

- B.Eng., Veermata Jijabai Technological Institute, Mumbai
- M.B.A., Tippie School of Management, University of Iowa

Experience

- Managed Fund since 2013



Brian S. Ellis, CFA
Executive Director, Portfolio Manager

Biography

Brian is an executive director of Morgan Stanley Investment Management and a portfolio manager on the Broad Markets Fixed Income team. He is responsible for buy and sell decisions, portfolio construction and risk management for the firm's Broad Markets strategies, including Calvert Research and Management Multi-Sector strategies. He joined Calvert Research and Management's predecessor organization Calvert Investment Management in 2009. Eaton Vance acquired Calvert Investment Management in 2016. Morgan Stanley acquired Eaton Vance in March 2021.

Brian began his career in the investment management industry in 2006. Before joining Eaton Vance, he worked as a portfolio manager of fixed-income strategies for Calvert Investments. He was previously affiliated with Legg Mason Capital Management (now ClearBridge Investments).

Brian earned a B.S. in finance from Salisbury University. He is a CFA charterholder and an FSA Credential holder. He is a member of the CFA Institute and CFA Society Boston.

Education

- B.S., Salisbury University

Experience

- Managed Fund since 2015

Literature

Literature



Fact Sheet

[Download](#) - Last updated: Dec 31, 2023



Commentary

[Download](#) - Last updated: Dec 31, 2023



Annual Report

[Download](#) - Last updated: Sep 30, 2023



Full Prospectus

[Download](#) - Last updated: Feb 1, 2024



Q1 Holdings

[Download](#) - Last updated: Dec 31, 2023



Q3 Holdings

[Download](#) - Last updated: Jun 30, 2023



Holdings - Form N-PORT

[Download](#)



SAI

[Download](#) - Last updated: Feb 1, 2024



Semi-Annual Report

[Download](#) - Last updated: Mar 31, 2023



Summary Prospectus

[Download](#) - Last updated: Feb 1, 2024



HEADQUARTERS

One Post Office Square
Boston, MA 02110

Investments

[Eaton Vance Funds](#)

[Parametric Funds](#)

[Calvert Funds](#)

[Separately Managed
Accounts](#)

[Closed-End Funds and
Term Trusts](#)

Insights

[Advisory Blog](#)

[The BEAT](#)

[Market Update Events](#)

[The Advisor Institute](#)

Taxes & Tools

[Investment Tax Center](#)

[Tax Information](#)

[Investment Tax Calculator](#)

[Laddered Investing Interest
Rate Scenario Tool](#)

[Concentrated Stock
Position Calculator](#)

[Tax-Equivalent Yield
Calculator](#)

Resources

[Forms & E-Delivery](#)

[Mutual Funds & Abandoned
Property](#)

[DST Vision](#)

[Active Advisor](#)

[Corporate Filings](#)

[Annual Reports](#)

[Press Releases](#)

[Diversity and Inclusion](#)

[Accessibility](#) | [Business Continuity](#) | [Privacy & Cookies](#) | [Your Privacy Choices](#) | [Terms & Conditions](#) | [Careers](#) | [Contact](#) | [Investor Account Access](#) | [Morgan Stanley Investment Management Terms of Use](#)

Eaton Vance is part of Morgan Stanley Investment Management, the asset management division of Morgan Stanley.

 This image indicates content designed specifically for Financial Advisors / Investment Professionals. This material is not to be used with the public.

Before investing in any Calvert fund, prospective investors should consider carefully the investment objective(s), risks, and charges and expenses. The current prospectus contains this and other information. To obtain a mutual fund prospectus or summary prospectus, contact your financial advisor or [download a copy here](#). Read the prospectus carefully before you invest or send money.

NOT FDIC INSURED | OFFER NO BANK GUARANTEE | MAY LOSE VALUE | NOT INSURED BY ANY FEDERAL GOVERNMENT AGENCY | NOT A DEPOSIT

Effective January 3, 2017, Eaton Vance Distributors, Inc. replaced Calvert Investments Distributors, Inc. ("CID") as the principal underwriter following the acquisition by Calvert Research and Management ("CRM") of substantially all the business assets of Calvert Investment Management, Inc. ("CIM"). CRM has also replaced CIM as the Investment adviser. Eaton Vance Distributors, Inc. does not provide tax or legal advice. Prospective investors should consult with a tax or legal advisor before making any investment decision.

The information on this Web page is for U.S. residents only and does not constitute an offer to sell, or a solicitation of an offer to purchase, securities in any jurisdiction to any person to whom it is not lawful to make such an offer.

© Calvert Research and Management. All rights reserved. Calvert open-end mutual funds are distributed by Eaton Vance Distributors, Inc. One Post Office Square, Boston, MA 02110. Member [FINRA](#) / [SIPC](#)

Publication details: Friday, March 29, 2024 12:04 AM

Page ID: CLDIX - <https://www.eatonvance.com/Calvert-Core-Bond-Fund-CLDIX.php>