



# Advanced Investing

Forward-thinking investors have more advanced needs. We provide a diverse selection of strategies and personalized wealth management solutions to meet them.

[LEARN MORE ABOUT MORGAN STANLEY INVESTMENT MANAGEMENT CAPABILITIES](#)

Time-tested investment principles

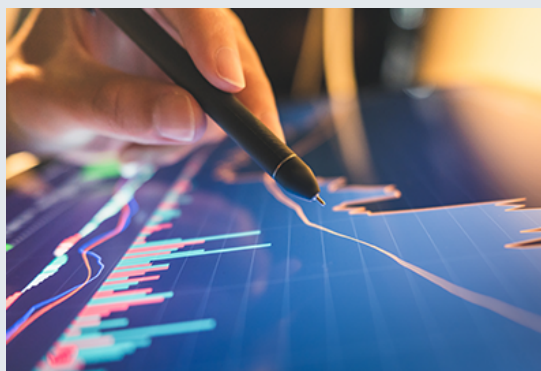
Deep and rewarding client experiences

Evolving strategies for changing needs

## Calvert Exchange-Traded Funds

Discover a new way to tap into Calvert's 40 years of responsible investing experience and expertise.

[SEE ETFs](#)



Featured Strategies

## National Municipal Income Fund (I)

EIHMIX

A diversified, credit-focused approach to municipal bond investing.

**\$9.17**

▼ **\$-0.01**

NAV as of Mar 20, 2023

## Short Duration Government Income Fund (I)

EILDIX

Diversified exposure to high-quality U.S. government securities—with limited interest-rate risk.

**\$7.50**

▼ **\$-0.01**

NAV as of Mar 20, 2023

## Calvert International Equity Fund (I)

CWVIX

The Fund seeks to provide a high total return consistent with reasonable risk by investing primarily in a diversified portfolio of stocks.

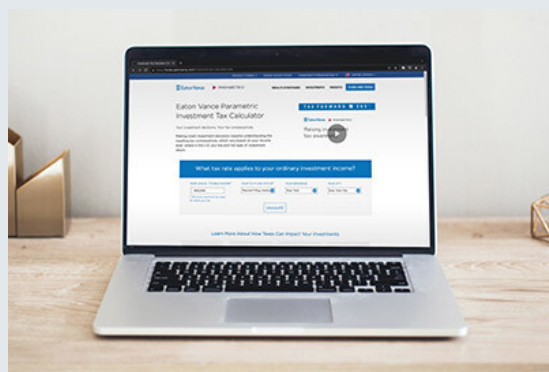
**\$21.79**

**\$0.25**

NAV as of Mar 20, 2023

[VIEW ALL PRODUCTS](#)

For information regarding a Fund's bank exposure please click [here](#).



## Interactive investment tax calculator

Determine your combined total tax rate, including federal, state and local taxes, for investment income and gains.

[LAUNCH](#)

## Morgan Stanley Investment Management Featured Strategies

### Core Plus Fixed Income Portfolio (I)

MPFIX

Combines top-down macro and asset allocation views with bottom-up fundamental and quantitative analysis.

### Global Franchise Portfolio (I)

MSFAX

Invests bottom-up in a concentrated portfolio of high-quality, well-managed companies at a reasonable price.

### US Core Portfolio (I)

MUOIX

Combines quantitative and fundamental research to identify 30-60 companies with strong investment potential.

[VIEW ALL PRODUCTS](#)

Get timely, in-depth insights from our experts to help guide investment discussions.



**Monthly Market Monitor**

Insightful charts on key markets



**Advisor Institute**

Strategies and commentary for advisor growth



**Advisory Blog**

Viewpoints from our global experts

**Explore Insights** >

## INVESTMENT CAPABILITIES

We offer a broad range of strategies, deep experience in sustainable investing and industry-leading customization and tax management solutions.

HIGH-CONVICTION  
EQUITIES

ACTIVE FIXED INCOME  
AND LIQUIDITY

ALTERNATIVE  
INVESTMENTS

CUSTOMIZED  
SOLUTIONS

SUSTAINABLE  
INVESTING

TAX  
SOLUTIONS



#### HEADQUARTERS

Two International Place  
Boston, MA 02110

#### Investments

- [Eaton Vance Funds](#)
- [Parametric Funds](#)
- [Calvert Funds](#)
- [Separately Managed Accounts](#)
- [Closed-End Funds and Term Trusts](#)

#### Insights

- [Advisory Blog](#)
- [Monthly Market Monitor](#)
- [Market Update Events !\[\]\(b7e1c8bc060ab2af8bc42ce81bfcf3c4\_img.jpg\)](#)
- [The Advisor Institute](#)

#### Taxes & Tools

- [Investment Tax Center](#)
- [Tax Information](#)
- [Investment Tax Calculator](#)
- [Laddered Investing Interest Rate Scenario Tool](#)
- [Concentrated Stock Position Calculator](#)
- [Tax-Equivalent Yield Calculator](#)

#### Resources

- [Forms & E-Delivery](#)
- [Mutual Funds & Abandoned Property](#)
- [DST Vision](#)
- [AdvisorCentral](#)

[Accessibility](#) | [Business Continuity](#) | [Privacy & Cookies](#) | [Terms & Conditions](#) | [Careers](#) | [Contact](#) | [Investor Account Access](#) | [Morgan Stanley Investment Management Terms of Use](#)

To report a website vulnerability, please go to [Responsible Disclosure](#).

Eaton Vance is part of Morgan Stanley Investment Management, the asset management division of Morgan Stanley.

For USA PATRIOT Act Disclosure Notice please click [here](#).

 This image indicates content designed specifically for Financial Advisors / Investment Professionals. This material is not to be used with the public.

Before investing in any Eaton Vance, Calvert or Morgan Stanley Investment Management Inc.-advised fund, prospective investors should consider carefully the investment objective(s), risks, and charges and expenses. Read the prospectus carefully before you invest or send money. For **open-end mutual funds**, the current prospectus contains this and other information. To obtain an **open-end mutual fund** prospectus or summary prospectus and the most recent annual and semiannual shareholder reports, contact your financial advisor or [download a copy here](#). For **closed-end funds**, you should contact your financial advisor. To obtain the most recent annual and semi-annual shareholder report for a closed-end fund contact your financial advisor or [download a copy here](#). To obtain an **exchange-traded fund**, ("ETF") prospectus or summary prospectus, contact your financial advisor or [download a copy here](#).

Before purchasing any **variable product**, consider the objectives, risks, charges, and expenses associated with the underlying investment option(s) and those of the product itself. For a prospectus containing this and other information, contact your investment or insurance professional. Read the prospectus carefully before investing.

NOT FDIC INSURED | OFFER NO BANK GUARANTEE | MAY LOSE VALUE | NOT INSURED BY ANY FEDERAL GOVERNMENT AGENCY | NOT A DEPOSIT

Eaton Vance does not provide tax or legal advice. Prospective investors should consult with a tax or legal advisor before making any investment decision. The information on this Web page is for U.S. residents only and does not constitute an offer to sell, or a solicitation of an offer to purchase, securities in any jurisdiction to any person to whom it is not lawful to make such an offer.

© Eaton Vance Management. All rights reserved.

Eaton Vance open-end mutual funds are offered through Eaton Vance Distributors, Inc. Two International Place, Boston, MA 02110. Member [FINRA](#) / [SIPC](#). Calvert exchange-traded funds are distributed by Foreside Fund Services, LLC.

Publication details: Tuesday, March 21, 2023 8:53 AM

Page ID: 182 - <https://funds.eatonvance.com/>